

Slim type CAT6A CABLE, PLUGS, BOOTS

CAT6A 28-AWG SLIM TYPE CABLE - 173 Series, RJ45 Plugs - 012-027SLM-100, Slip-On Boots - 017-067TR-100

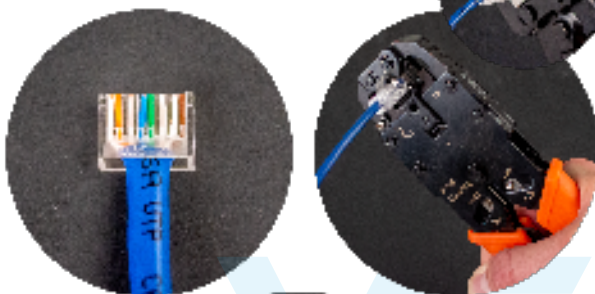
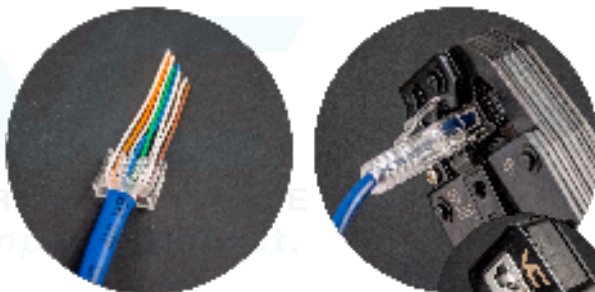
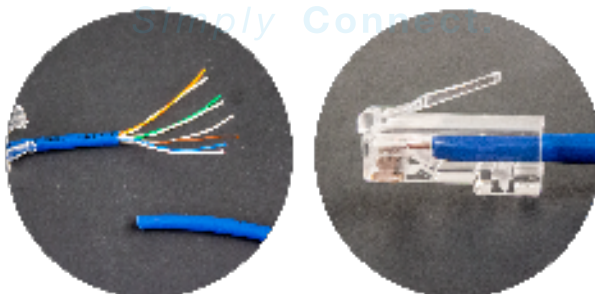
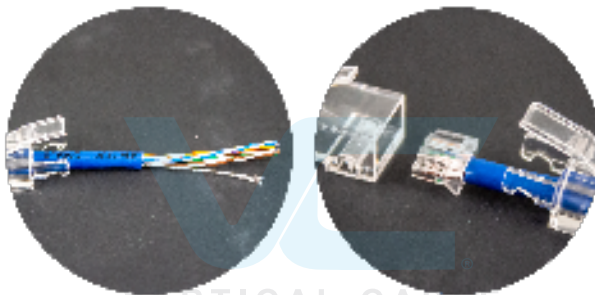
1 Put the slip-on boot on the cable. Remove about 1 inch of the cable jacket. To prevent damaging conductor insulation, use a cutting tool that does not cut through jacket material. Untwist and straighten the conductors. Using a piece of the cable jacket helps with the process.

2 Arrange the conductors according to the desired wiring scheme and trim the ends at an angle in a straight line. Cutting conductors' ends at different lengths helps inserting them into the loading bar.

NOTE:
Ring conductors' insulation has no color stripes, when untwisting and arranging per the wiring scheme keep track of each to avoid miswiring errors.

3 With the conductors arranged per the wiring scheme sequence from left to right, keep the load bar flat side up and angled side down. Feed the conductors through the openings in the load bar leaving as little space as possible between the load bar's end and the edge of the cable jacket.

4 Cut the conductor excess flush with the end of the load bar.



5 Insert the load bar all the way into the plug. Visually check there is no gap between the front end of the bar and the plug.

6 Place the slip-on boot on the plug for the latch protection and neat professional look.

7 Insert the plug into a proper crimping tool (recommended compatible Vertical Cable tools: 078-2152/EZC, 078-1017), squeeze the handles until the ratchet stops, release the handles and squeeze one more time to make sure the ratchet reaches its end position. Visually check all contact pins are fully depressed and bare copper ends of the conductors are clearly seen at the front of the plug.

Florida (HQ)
800-749-2447

California
951-696-7772

New York
845-391-8318

Texas
713-322-7242

verticalcable.com

This specification sheet is subject to change without notice.



VERTICAL CABLE

Rev. 06/2026