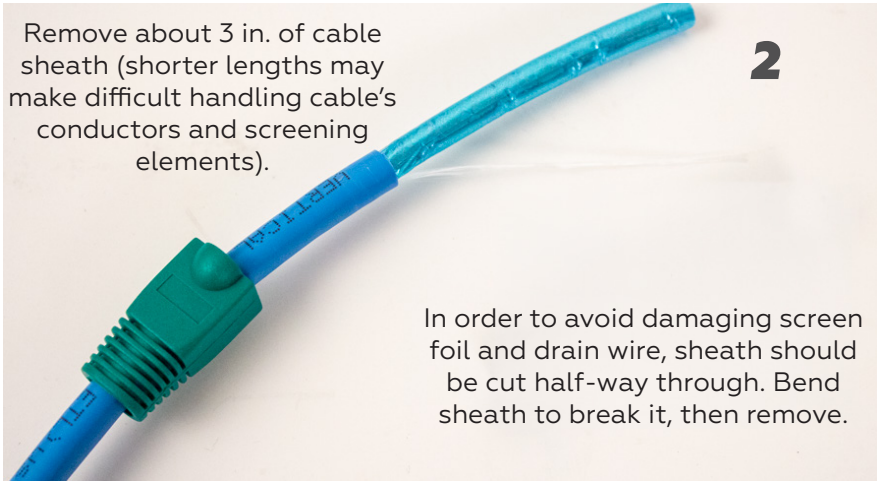


TERMINATION INSTRUCTIONS

012-021-100 CAT6 RJ45 MODULAR PLUG

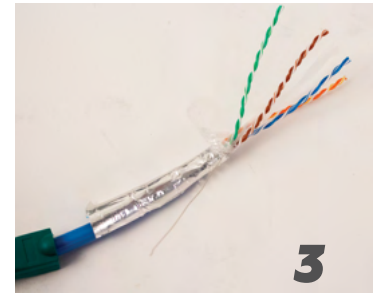


1
Place boot (if part of plug) on cable before starting termination procedures.

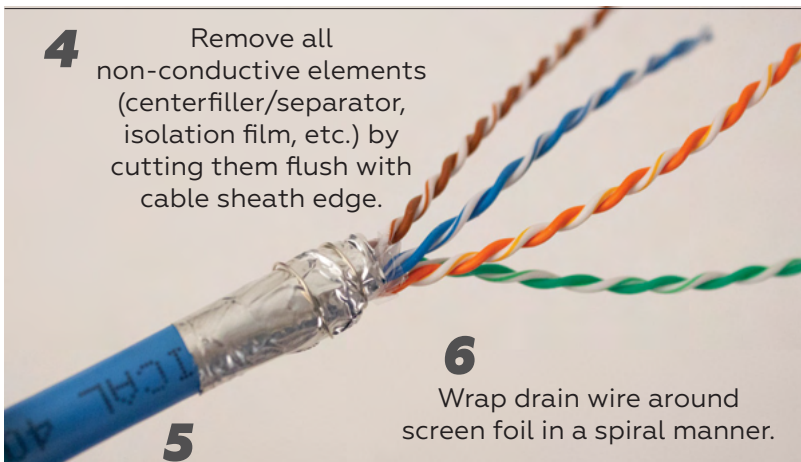


2
Remove about 3 in. of cable sheath (shorter lengths may make difficult handling cable's conductors and screening elements).

In order to avoid damaging screen foil and drain wire, sheath should be cut half-way through. Bend sheath to break it, then remove.

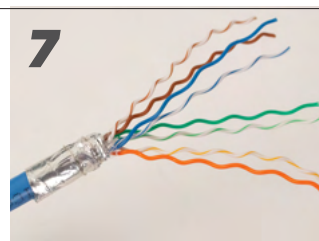


3
Unfold and flatten screen foil, bend it back over cable sheath. Straighten drain wire and fold it back along cable sheath.

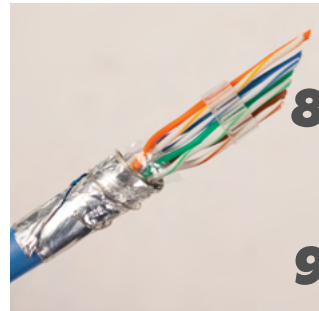


4
Remove all non-conductive elements (centerfiller/separators, isolation film, etc.) by cutting them flush with cable sheath edge.

6
Wrap drain wire around screen foil in a spiral manner.



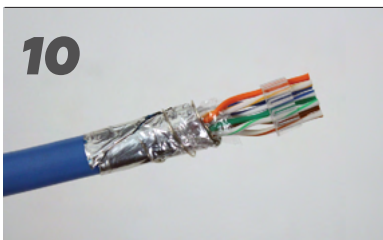
7
Separate, untwist, and straighten conductors. Arrange conductors according to required wiring scheme in flat pattern.



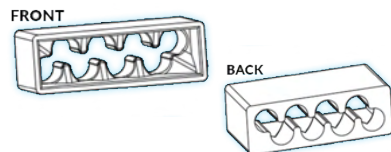
8
Cut conductor excess (approximately 1/2 in) at an angle.

5
Wrap screen foil around cable sheath. Make sure foil is placed with its unlaminated surface facing outwards. Cut foil excess at a distance approximately 1/2 in. from cable sheath edge.

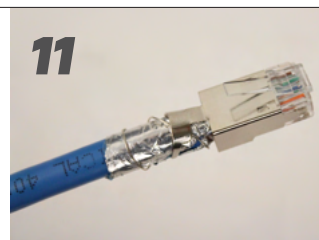
9
Thread conductors through load bar openings maintaining their pre-set order.



10
Cut conductor excess at 3/4 -in distance from cable sheath edge.



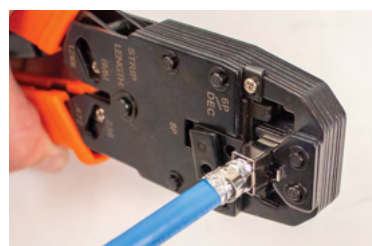
11
Note: The FRONT (wire inlet) is concave with a flared opening where the wire enters and slides into the cable grooves. The BACK (wire outlet) is flat.



Fully insert load bar with conductors into plug.



Note: Before crimping the plug remove the center teeth/cast from the termination tool. This will prevent damages to the housing case. Tool used: 078-1017



12
Crimp plug using compatible crimping tool.
*Compatible VC Tools:
078-1017
078-2154/EZC/S*



13
Wrap tails of plug's screen contact around cable screen and drain wire and press firmly.



14
Place boot on plug.

Florida (HQ)
800-749-2447

California
951-696-7772

New York
845-391-8318

Texas
713-322-7242

verticalcable.com

This specification sheet is subject to change without notice.

VC
VERTICAL CABLE
Rev. 06/2026