



VERTICAL CABLE

CAT6A CMR CABLE

F/UTP (SHIELDED) | RISER-RATED

064-700s SERIES

DESCRIPTION

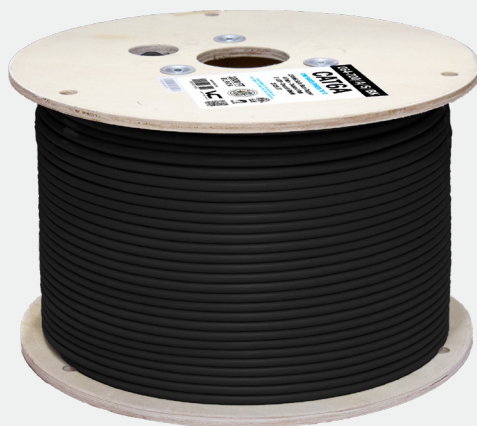
CAT6A F/UTP CMR (Riser-Rated) 23 AWG Solid Bare Copper, Wooden Spool, 1000 ft

FEATURES

- Shielded Twisted Pair (F/UTP) Construction
- 23 AWG Solid Bare Copper Conductors
- High-Performance Data Cable
- Exceeds ANSI/TIA-568.2-D and ISO/IEC 11801
- Supports PoE (Type 4) IEEE 802.3bt (up to 100W)
- ETL-Listed, RoHS Compliant
- Supplied in 1000 ft. Wooden Spool
- Weight: 42 lbs (19.05 kg)

Compatible with VC RJ45 plugs

012-021-100 | 012-024/10G
012-026/EZF-100



PART NUMBERS	
064-700/A/S/BK ● (Black)	064-704/A/S/OR ● (Orange)
064-701/A/S/BL ● (Blue)	064-706/A/S/PR ● (Purple)
064-702/A/S/GR ● (Green)	064-707/A/S/RD ● (Red)
064-703/A/S/GY ● (Grey)	064-708/A/S/WH ○ (White)
064-709/A/S/YL ● (Yellow)	

CONDUCTORS

Count: 8 Conductors / 4 Pair
 Gauge: 23 AWG
 Diameter: 0.022 in. (0.56 mm)
 Material: Solid Bare Copper

INSULATION

Outside Diameter: 0.04 in. (1.01 mm)
 Average Thickness: 0.01 in. (0.21 mm)
 Color Coding: Pair 1: Blue/White-Blue Pair 2: Orange/White-Orange
 Pair 3: Green/White-Green Pair 4: Brown/White-Brown
 LDPE

Separator: Yes
 Rip Cord: Cross-Section
 Filler: PET Tape and Aluminum poly laminate

OVERALL SCREEN

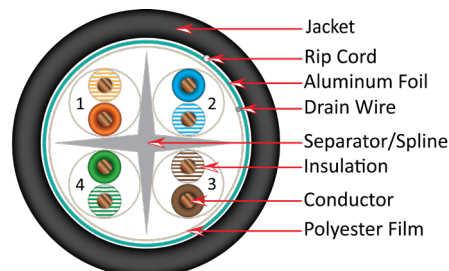
Drain Wire Material: TC
 Drain Wire Size: 0.02 in. (0.5 mm)
 Shield: AL/PET

JACKET

PVC
 Outer Diameter: 0.3 in (7.6 mm)
 Average Thickness: 0.024 in (0.6 mm)
 Min. Point Thickness: 0.02 in. (0.5 mm)
 Marking: VERTICAL CABLE c(ETL)us 5006092 CMR
 75C F/UTP 4PR 23AWG CAT6A
 ANSI/TIA-568.2-D RoHS V2034P11455
 XXXXFT

STANDARDS

ISO11801 & ANSI/TIA- 568.2-D, UL Subject to 444



Florida (HQ)
800-749-2447

California
951-696-7772

New York
845-391-8318

Texas
713-322-7242

verticalcable.com

This specification sheet is subject to change without notice.



RoHS



Intertek

Rev. 06/2026

TECHNICAL DATA

Rated Temperature:	-20°C ~ +75°C
Voltage Rating:	30 V _{RMS}
NVP:	74%

MECHANICAL & ELECTRICAL CHARACTERISTICS

Characteristic Impedance:	1.0-100 MHz Impedance, 100±15% 101-250 MHz Impedance, 100±22% 251-500 MHz Impedance, 100±25%
Maximum Pulling Force:	100 N
Minimum Bending Radius:	8*OD
Nominal Weight:	55 KG/KM
Operating Temperature:	-20°C ~ +75°C
Installation Temperature:	0°C ~ +60°C
Conductor DCR (20°C):	≤93.8Ω/km
Fire Performance:	ROHS, IEC60332-1,CMR Rate
Testing Requirement:	Pass fluke link 295FT (90 m) testing based on ANSI/TIA 568C.2 CAT6A standard

Frequency (Mhz)	Insertion Loss (dB/100m)	NEXT (dB/100m)	PSNEXT (dB/100m)	ACRF (dB/100m)	PSACRF (dB/100m)	ReturnLoss (dB/100m)	Delay (ns/100m)
1	1.9	65.0	62.0	64.2	61.2	19.1	521
4	3.5	64.1	61.8	52.1	49.1	21.0	504
8	5.0	59.4	57.0	46.1	43.1	21.0	500
10	5.5	57.8	55.5	44.2	41.2	21.0	498
16	7.0	54.6	52.2	40.1	37.1	20.0	496
20	7.8	53.1	50.7	38.2	35.2	19.5	495
25	8.8	51.5	49.1	36.2	33.2	19.0	495
31.25	9.8	50.0	47.5	34.3	31.3	18.5	494
62.5	14.0	45.1	42.7	28.3	25.3	16.0	492
100	18.0	41.8	39.3	24.2	21.2	14.0	491
200	26.1	36.9	34.3	18.2	15.2	11.0	490
250	29.5	35.3	32.7	16.2	13.2	10.0	490
300	32.7	34.0	31.4	14.6	11.6	9.2	490
400	38.4	29.9	27.1	12.1	9.1	8.0	490
500	43.8	26.7	23.8	10.2	7.2	8.0	490

Florida (HQ)
800-749-2447

California
951-696-7772

New York
845-391-8318

Texas
713-322-7242

verticalcable.com

This specification sheet is subject to change without notice.



RoHS



Intertek

Rev. 06/2026