



VERTICAL CABLE

CAT6 CMR RISER CABLE

UTP | 550 MHZ | NO SPLINE

060-SL SERIES

DESCRIPTION

CAT6, 23 AWG, UTP, ETL-Listed, 8C Solid Copper, 550 MHz, Riser Rated, PVC Jacket - No Spline, 1000 ft.

FEATURES

- Unshielded Twisted-Pair (UTP) Construction
- Riser Fire Safety Rating (CMR)
- 23 AWG Bare Copper Conductors
- Easy-to-See Vivid-Color Conductor Insulation & Jacket
- Meets or exceeds ANSI/TIA-568.2-D Transmission Performance Specifications
- Easily Identified Color-Striped Pairs
- Supports PoE (Type 4) IEEE 802.3bt (51W)
- ETL Listed, RoHS Compliant
- Designed in the USA, Imported Product
- 1000 ft. Pull Box
- Weight: 25 lb. (11.34 kg)



PART NUMBERS			
060-550/SL/BK	● (Black)	060-554/SL/GR	● (Green)
060-552/SL/BL	● (Blue)	060-566/SL/WH	○ (White)
060-568/SL/YL		● (Yellow)	

CONDUCTOR

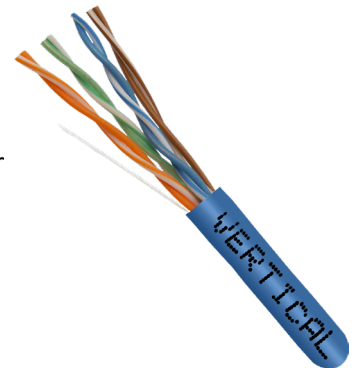
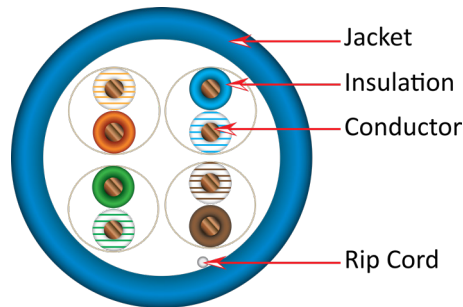
Solid Bare Copper
 Size: 23 AWG
 Outer Diameter: 0.02 in. (0.55 mm ±0.01)

INSULATION

HDPE
 Average Thickness: 0.008 in. (0.20 mm)
 Insulation Diameter: 0.039 in. (0.99 mm ±0.05)
 Twisted Pair Diameter: 0.08 in. (2.02 mm ±0.01)

JACKET

PVC
 Average Thickness: 0.02 in. (0.50 mm)
 Outer Diameter: 0.22 in. (5.5 mm ±0.3)
 Rip Cord: Yes
 Color Coding: Pair 1: Blue/White-Blue Pair 2: Orange/White-Orange
 Pair 3: Green/White-Green Pair 4: Brown/White-Brown
 Marking: VERTICAL CABLE 5024318 c(ETL)us CMR 75C UTP 4PR 23AWG FT4 550MHz CAT6 ANSI/TIA-568.2-D RoHSV2094P14517 XXXXFT



Florida (HQ)
800-749-2447

California
951-696-7772

New York
845-391-8318

Texas
713-322-7242

verticalcable.com

This specification sheet is subject to change without notice.



RoHS



Intertek

Rev. 02/2026

ELECTRICAL CHARACTERISTICS

Character Impedance (Ohms):	100±15
Delay Skew (ns/100m):	<45
Pair-to-Ground Capacitance Unbalance (pF/100m):	<330
Conductor DC Resistance 20°C (ohms/km):	93.8 Ω/km
Resistance Unbalance (%):	<5

MECHANICAL

Test Object:	Jacket
Test Material:	PVC
BEFORE AGING	
Tensile Strength (MPa):	13.8 MPa
Aging Elongation (%):	100
AFTER AGING	
Tensile Strength (MPa):	≥85% of unaged
Aging Elongation (%):	≥50% of unaged
Cold Bend (-20±2° Cx4hrs):	No Crack

TECHNICAL DATA

Temperature Rating:	-20 °C to 75 °C
Voltage Rating:	300 V
Product Standard Certification:	CMR
NVP:	69%

Frequency (Mhz)	Insertion Loss (dB)	Next (dB)	PSNext (dB)	ACRF (dB)	PSACRF (dB)	Return Loss (dB)	Delay (ns)
1.00	1.9	65.0	62.0	64.2	61.2	19.1	521.0
4.00	3.5	64.1	61.8	52.1	49.1	21.0	504.0
8.00	5.5	59.4	57.0	46.1	43.1	21.0	500.0
10.00	5.5	57.8	55.5	44.2	41.2	21.0	498.0
16.00	7.0	54.8	52.5	40.1	37.1	20.0	496.0
20.00	7.9	53.1	50.7	38.2	35.2	19.5	495.0
25.00	8.9	51.5	49.1	36.2	33.2	19.0	495.0
31.25	10.0	50.0	47.5	34.3	31.3	18.5	494.0
62.50	14.4	45.1	42.7	28.3	25.3	16.0	492.0
100.00	18.6	41.8	39.3	24.2	21.2	14.0	491.0
200.00	27.4	36.9	34.3	18.2	15.2	11.0	490.0
250.00	31.1	35.3	32.7	16.2	13.2	10.0	490.0

Florida (HQ)
800-749-2447

California
951-696-7772

New York
845-391-8318

Texas
713-322-7242

verticalcable.com

This specification sheet is subject to change without notice.



RoHS



Intertek

Rev. 02/2026