

RJ45 KEYSTONE COUPLERS (CAT5E & CAT6 - UNSHIELDED)



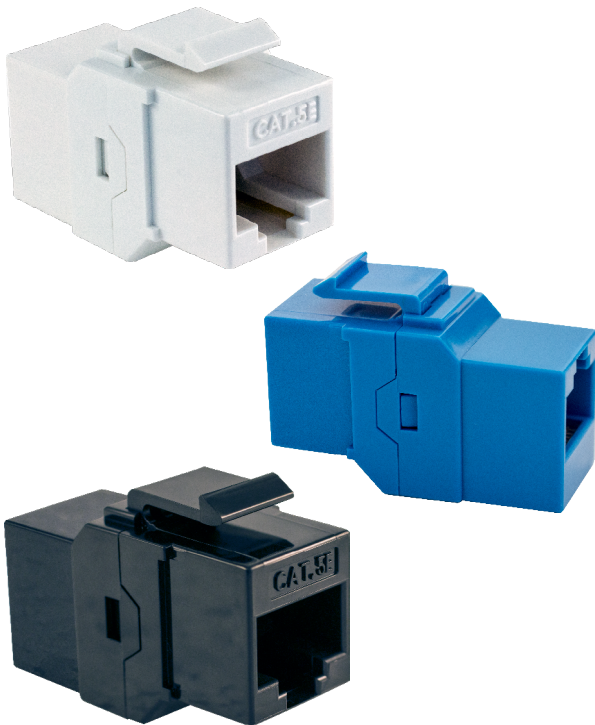
DESCRIPTION

301-K: CAT5E Keystone Coupler, Unshielded

302-K: CAT6 Keystone Coupler, Unshielded

FEATURES

- Keystone Coupler for CAT5E and CAT6 applications
- Snaps in and out of blank patch panels
- Flexible tab allows for quick installation
- Available in Blue, Black, White



301-K & 302-K Series

Material:

RJ45 Jack

Housing
Contact Bracket
Colors

ABS, UL 94V-0
PC, UL 94V-2
Black, White, Blue

RJ45Jack Contact

Material
Finish

PCB

Phosphor Bronze, Nickel Plated
50micro inch Gold plated
on Plug contact area
FR4, UL 94V-0

Performance:

Insertion Force
Retention Force
Operating Temp

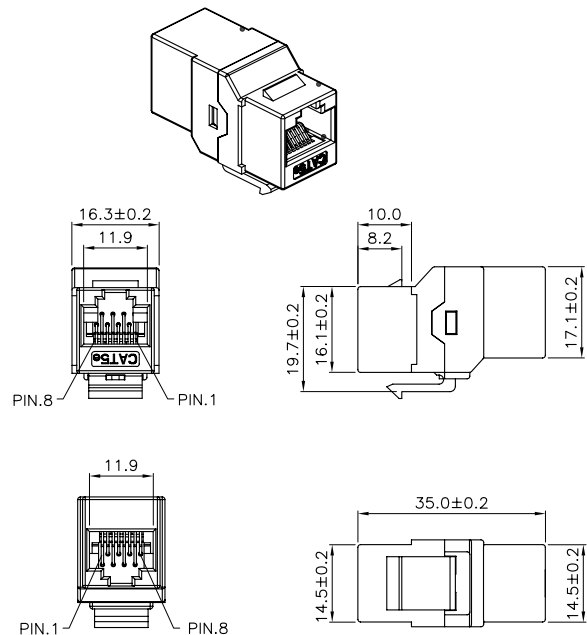
20N max (IEC 60603-7-4)
7.7kg between Jack and Plug
-10°C - 60°C (ISO/IEC 11801,
ANSI/TIA/EIA 568B.2)

Life (mating cycles)

750 cycles min (ISO/IEC
11801, IEC 60603-7-4)

Transmission Performance

ANSI/TIA/EIA 568B.2 Standard



VERTICAL CABLE

951.696.7772 California
800.749.2447 Florida
845.391.8318 New York
713.322.7242 Texas



verticalcable.com

Rev. 06/2025

Subject to change without notice.