



**VERTICAL CABLE**

# CAT6 CMR CABLE

UTP | 550 MHz

## 060 SERIES

### DESCRIPTION

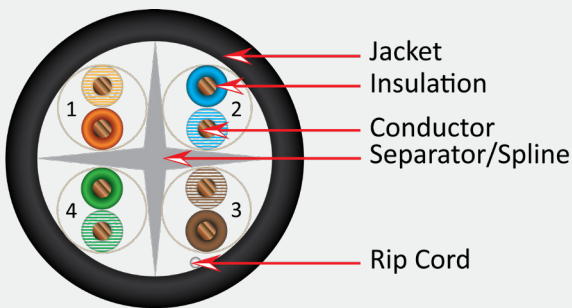
**CAT6, 23 AWG, UTP, UL-Listed, 8C Solid Copper, 550MHz, Riser Rated, PVC Jacket 1000 ft.**

### FEATURES

- Supports PoE Type 4 (IEEE 802.3bt) up to 100 W
- 23-AWG solid bare copper conductors
- Exceeds ANSI/TIA-568.2-D and ISO/IEC 11801
- UL-listed, RoHS-Compliant
- 1000 ft Pull Box
- Weight: 30 lb. (13.6 kg)

#### Compatible with VC RJ45 plugs

012-022-100 | 012-023/EZF-100



PART NUMBERS		
060-610/U/BK	● (Black)	060-626/U/WH ○ (White)
060-612/U/BL	● (Blue)	060-628/U/YL ● (Yellow)
060-614/U/GR	● (Green)	

#### CONDUCTOR

Solid Bare Copper

Size:

23 AWG

#### INSULATION

PE

Average Thickness: 0.009 in. (0.22 mm)

Min. Point Thickness: 0.007 in. (0.19 mm)

Insulation Diameter: 0.04 in. (1.01 mm 0.005)

Twisted Pair Diameter: 0.08 in. (2.02 mm ±0.01)

#### SEPARATOR

PP

#### ASSEMBLY DIAMETER

0.2 in. (5.00 mm)

#### JACKET

PVC

Average Thickness: 0.024 in. (0.60 mm)

Min. Point Thickness: 0.02 in. (0.50 mm)

Outer Diameter: 0.24 in. (6.20 mm ±0.1)

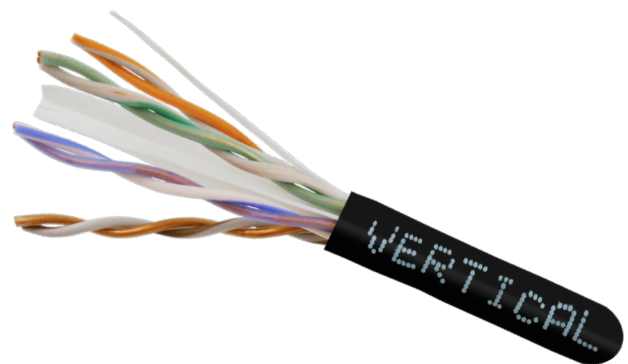
Rip Cord: Yes

Color Coding: Pair 1: Blue/White-Blue Pair 2: Orange/White-Orange

Pair 3: Green/White-Green Pair 4: Brown/White-Brown

Marking: E502490 ETL CMR 75C UTP 4PR 23AWG FT4

550MHz CAT6 ANSI/TIA-568.2-D RoHS XXXXT



Florida (HQ)  
800-749-2447

California  
951-696-7772

New York  
845-391-8318

Texas  
713-322-7242

[verticalcable.com](http://verticalcable.com)

This specification sheet is subject to change without notice.



Rev. 05/2026

## ELECTRICAL CHARACTERISTICS

1.0-100MHz Impedance (Ohms):	100±15
100-250MHz Impedance (Ohms):	100±25
250-550MHz Impedance (Ohms):	100±35
1.0-250MHz Delay Skew (ns/100m):	≤45
Pair-to-Ground Capacitance Unbalance (pF/100m):	≤330
Max. Conductor DC Resistance 20°C (ohms/km):	95
Resistance Unbalance (%):	≤5

## MECHANICAL

Test Object:	Jacket
Test Material:	PVC

### BEFORE AGING

Tensile Strength (MPa):	>13.8 MPa
Aging Elongation (%):	>100
Aging Condition (°Cxhrs):	100x168

### AFTER AGING

Tensile Strength (MPa):	≥85% of unaged
Aging Elongation (%):	≥50% of unaged
Cold Bend (-20±2° Cx4hrs):	No Crack

## TECHNICAL DATA

Temperature Rating:	70 °C
Voltage Rating:	300 V
Product Standard Certification:	CMR
NVP:	69%

Frequency (Mhz)	Return Loss (Min dB)	Attenuation (Max dB/100)	Next (ns/100m)	PSNEXT (Min dB)	ELFEXT (Min dB/100m)	Delay (Max ns/100m)
0.772	19.4	1.8	76.0	74.0	70.0	-----
1	20.0	2.0	74.3	72.3	67.8	570.0
4	23.0	3.8	65.3	63.3	55.8	552.0
8	24.5	5.3	60.8	58.8	49.7	546.0
10	25.0	6.0	59.3	57.3	47.8	545.0
16	25.0	7.6	56.2	54.3	43.7	543.0
20	25.0	8.5	54.8	52.8	41.8	542.0
25	24.3	9.5	53.3	51.3	39.8	541.0
31.25	23.6	10.7	51.9	49.9	37.9	540.0
62.5	21.5	15.4	47.4	45.4	31.9	538.0
100	20.1	19.8	44.3	42.3	27.8	537.0
200	18.0	29.0	39.8	37.8	21.8	536.0
250	17.3	32.8	38.3	36.3	19.8	536.0
350	16.3	39.8	36.1	34.1	17.1	-----
450	15.5	46.0	34.5	32.5	15.2	-----
550	14.9	51.7	33.2	31.2	13.2	-----