



VERTICAL CABLE

WALL-MOUNT BRACKET

HINGED TYPE | ADJUSTABLE | 2 RMU

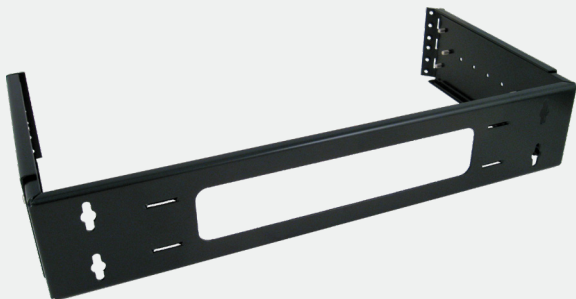
046-389/E

DESCRIPTION

2 RMU, Hinged Type Adjustable Wall-Mount Bracket

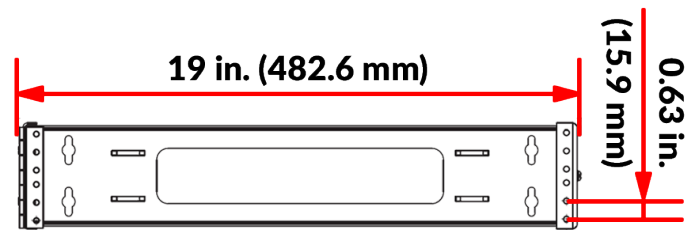
FEATURES

- Fits any standard 2 RMU 19 in. patch panel
- Hinged design for easy access
- Adjustable depth from 10 to 13 in.
- Cold-rolled steel (SPCC), 2 mm thickness (14 gauge)
- Includes M4 screws
- Weight: 6 lb. (2.72 kg)

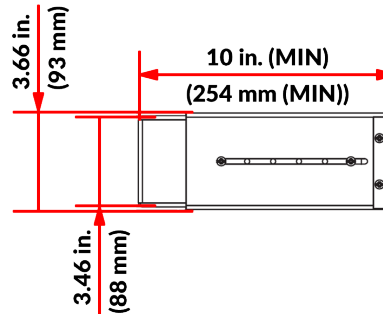


DIMENSIONS

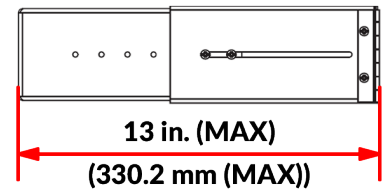
Height:	3.5 in. (88.9 mm)
Width:	19 in. (482.6 mm)
Depth:	10 in. – 13 in. (254 mm – 330.2 mm)
Color:	Black



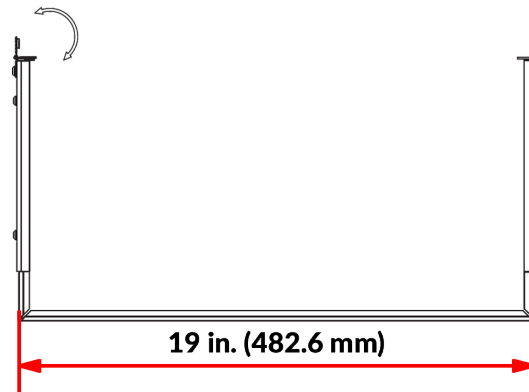
FRONT VIEW



SIDE VIEW (MIN)



SIDE VIEW (MAX)



TOP VIEW

Florida (HQ)
800-749-2447

California
951-696-7772

New York
845-391-8318

Texas
713-322-7242

verticalcable.com

This specification sheet is subject to change without notice.

Rev. 05/2026