



VERTICAL CABLE

RJ45 INLINE COUPLERS

CAT5E/CAT6 (UNSHIELDED)

040-300 SERIES

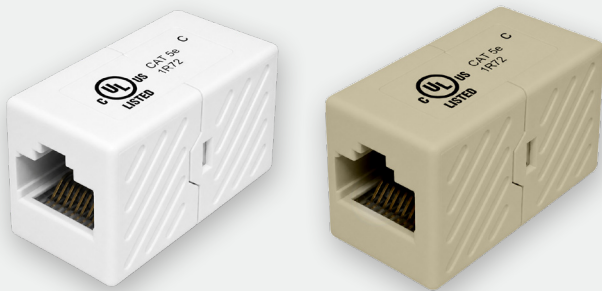
DESCRIPTION

CAT5E / CAT6 RJ45 Inline Coupler, Unshielded, Ivory/White

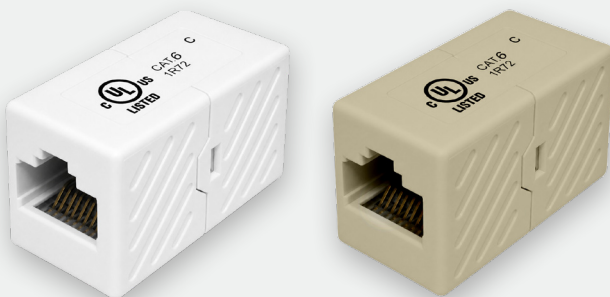
FEATURES

- RJ45 to RJ45 inline coupler
- Connects two patch cables together
- Gold-plated RJ45 jack contacts
- Available in ivory and white colors
- ANSI/TIA-568.2-D, ISO/IEC 11801 & IEC60603-7-4 compliant
- RoHS Compliant, UL-Listed
- Master bag includes 50 individually packed pieces (can be sold separately)

CAT 5E



CAT 6



| Part Number: | Description: |
|---------------|----------------------------------|
| 040-364/C5/IV | CAT5E RJ45 inline Coupler, Ivory |
| 040-365/C5/WH | CAT5E RJ45 inline Coupler, White |
| 040-368/C6/IV | CAT6 RJ45 inline Coupler, Ivory |
| 040-369/C6/WH | CAT6 RJ45 inline Coupler, White |

MATERIAL

Jack Housing: ABS, UL94V-0
 Contact Bracket (CAT5E/CAT6): PC, UL94V-2, transparent
 Contact Bracket (CAT6A): PBT+Glass Fiber, UL94V-0, black
 RJ45 Contact: Phosphor Bronze, Nickel-Plated
 Finish: 50 μ in. Gold-Plated Contact
 PCB: FR4, UL 94V-0

JACK PERFORMANCE

Insertion Force: 20N Max (IEC 60603-7-4)
 Retntion Strength: 7.7 kg bewtween jack and plug
 Life Mating Cycle: 750 cycles minimum (ISO/IEC 11801, IEC 60603-7-4)

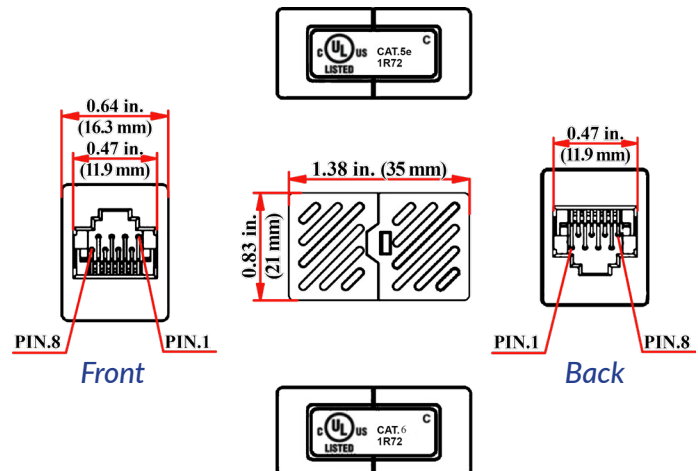
ENVIRONMENTAL

Operating Temperature: -10 °C to 60 °C

PERFORMANCE RATING

Meets or exceeds ANSI/TIA/EIA 568.2-D, ISO/IEC 11801

CAT5E & CAT6



Florida (HQ)
800-749-2447

California
951-696-7772

New York
845-391-8318

Texas
713-322-7242

verticalcable.com

This specification sheet is subject to change without notice.



Rev. 03/2026