



VERTICAL CABLE

# UNIVERSAL WRENCH

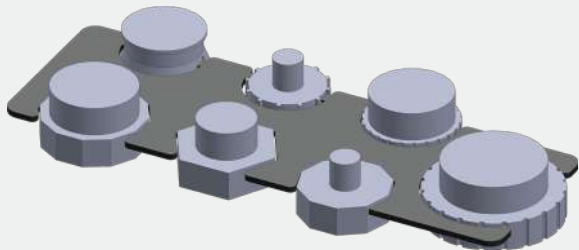
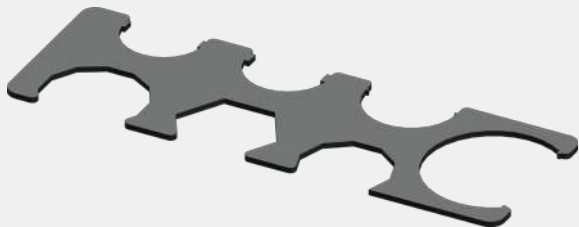
## 259-IMT01-A001

### DESCRIPTION

Universal Wrench for IP-Rated Connectors

### FEATURES

- Powder Coating Flat Matte Sand Black Finish
- Tolerances consist of ISO 2768-1 Fine or Equipment-Supported
- All Rounded Corners Unless Otherwise Specified are 2 mm or Nearest Value Available
- Weight: 2.92 oz (82.8 g)



### MATERIAL

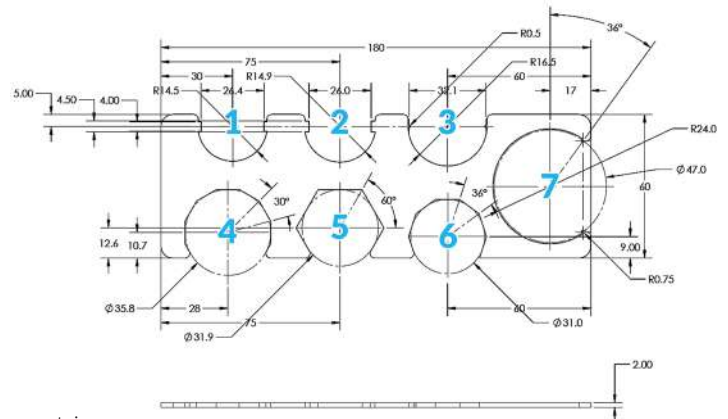
2.0-mm Galvannealed Carbon Steel

### DIMENSIONS

Thickness:	0.08 in. (2.0 mm)
Width:	2.36 in. (60 mm)
Length:	7.09 in. (180 mm)
Wrench 1) Diameter:	R0.57 in. (R14.5 mm)
Wrench 2) Diameter:	R0.59 in. (R14.9 mm)
Wrench 3) Diameter:	R0.65 in. (R16.5 mm)
Wrench 4) Diameter:	ø1.41 in. (ø35.8 mm)
Wrench 5) Diameter:	ø1.26 in. (ø31.9 mm)
Wrench 6) Diameter:	ø1.22 in. (ø31.0 mm)
Wrench 7) Diameter:	ø1.85 in. (ø47.0 mm)

### VC COMPATIBLE PRODUCTS

- **IP-Rated Boxes:**  
253-SMB67-A1 | 253-SMB67-A2 | 253-SMB67-A3 | 253-SMB67-A4
- **Cable Glands and Blank Plugs:**  
259-SLC01-F0C1 | 259-SLC01-F0A1 | 259-SLC01-F0A2  
250-IOM68-A000 | 259-SLC02-B0F
- **Outlet/Terminal Modules:**  
250-IOM68-A1A2 | 250-IOM68-A2A2 | 250-IOM68-A300  
250-ITM68-A2A2 | 250-ITM68-B1A2 | 250-ITM68-D1A2  
250-ITM68-C031 | 250-ITM68-C042 | 250-ICP68-B1A2
- **Copper Coupler Modules:**  
250-ICP68-A1A2 | 250-ICP68-B1A2 | 250-ICP68-C1A2  
040-381/C6/OWP | 040-382/C6A/OWP | 250-ICP68-D4Z2  
250-ICP68-D4Y2 | 250-ICP68-D4C2



\*Measurements in mm

Florida (HQ)  
800-749-2447

California  
951-696-7772

New York  
845-391-8318

Texas  
713-322-7242

verticalcable.com

This specification sheet is subject to change without notice.

Rev. 04/2026