



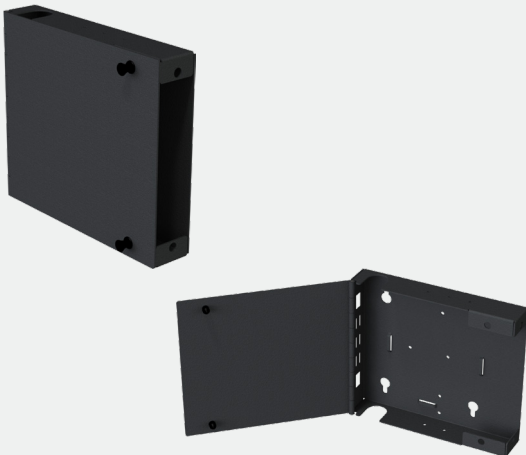
VERTICAL CABLE

## DESCRIPTION

**Optical Fiber Surface-Mount Box, Standard-Series, LGX, One-Position**

## FEATURES

- Holds one (1) LGX adapter plate (up to 24 fibers)
- Durable 15-GA aluminum alloy, Black Powder-Coated Finish
- Single Door, Panel Fasteners
- Cable management: Two cable entry openings; two mounting positions for MPO adapters; cable anchor points; set of cable ties.
- Fiber management: anchor points, rings.
- Includes:
  - 1 × box with cover
  - 2 × panel fastener sets of cover latching
  - 2 × fiber management plastic rings with adhesive pads
  - 4 × nylon cable ties
  - 1 × shipping box
- Weight: 7 oz (200 g)



# OPTICAL FIBER SURFACE-MOUNT BOX

STANDARD-SERIES | LGX | ONE-POSITION

## 268-SMB01-1A1

### CHARACTERISTICS

Materials: 0.06 in. (1.5 mm) (15-GA) aluminum alloy; Black Powder Coating  
Access: Single Door, Panel Fasteners ("push-pins"/"plunger locks")  
Mounting: Surface/wall

### CAPACITY

Adapter Plates: One LGX Adapter Plate  
Optical Fibers: Up to 24 optical fibers  
Splice Trays: Up to one 12-fiber splice holders

### ENVIRONMENTAL

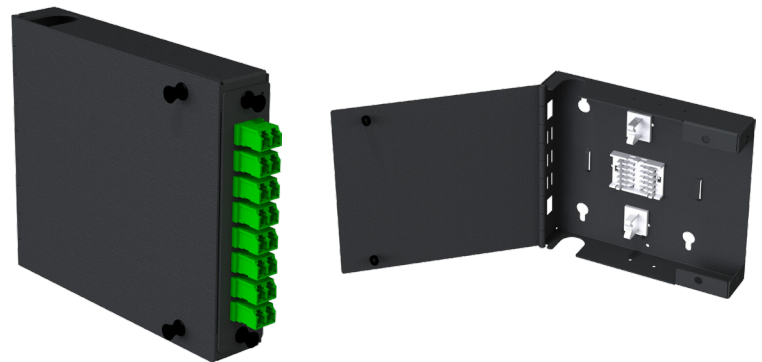
Operating Temperature: -20 °C--+70 °C (-4 °F--+158 °F)  
Operating Humidity: ≤95 % RH non-condensing

### DIMENSIONS

Height:	1.6 in. (40.64 mm)
Width:	6.3 in. (160.02 mm)
Depth:	1.3 in. (33.02 mm)

### VERTICAL CABLE ACCESSORIES

1. 264-LAP Series LGX Adapter Plates
2. 268-ACC03-11-00 Splicing Stage
3. 265-HLD01-2B-00 Optical Fiber Splice Holder, Adhesive Mounting
4. 265-SLV01-3A-1H Optical Fiber Splice Protection Sleeve



\*Accessories NOT INCLUDED

Florida (HQ)  
800-749-2447

California  
951-696-7772

New York  
845-391-8318

Texas  
713-322-7242

[verticalcable.com](http://verticalcable.com)

This specification sheet is subject to change without notice.

Rev. 02/2026