



VERTICAL CABLE

BEAM CLAMP FOR J-HOOK

3/4 IN.

048-160/BC

DESCRIPTION

3/4 IN BEAM CLAMP FOR J-HOOK

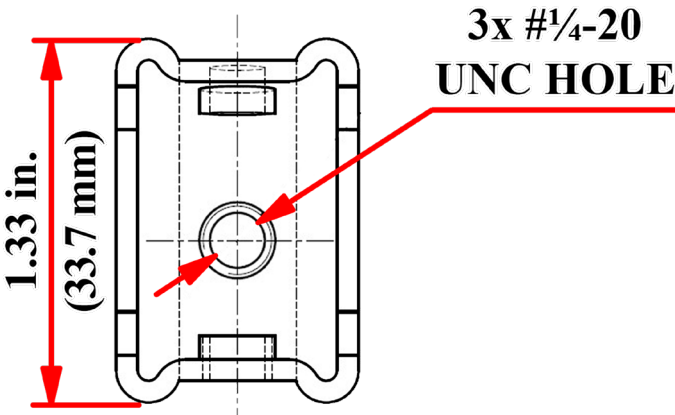
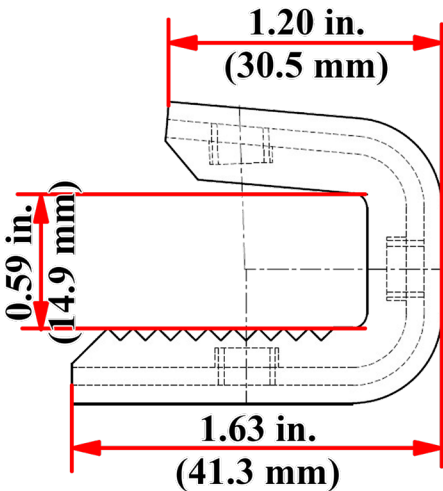
FEATURES

- Material: Cold rolled steel
- Thickness: 0.079 in. (2.0 mm)
- Finish: Zinc plated
- Free of sharp edge and burrs
- Max burr: 0.005 in. (0.127 mm)
- #1/4-20 × 1 combo Philips/stotted hex head cup point machine screw, case hardness
- All dimensions in inches and [millimeters]
- 100x per master box (sold separately)



DIMENSIONS

| | |
|--------------------|--------------------|
| Height: | 1.33 in. (33.7 mm) |
| Width: | 1.63 in. (41.3 mm) |
| Flanged Thickness: | 0.59 in. (14.9 mm) |
| Thickness: | 0.08 in. (2 mm) |



Florida (HQ)
800-749-2447

California
951-696-7772

New York
845-391-8318

Texas
713-322-7242

verticalcable.com

This specification sheet is subject to change without notice.

Rev. 01/2026