

J-HOOK WITH ANGLE BRACKET - 3/4 in. | 2 in. | 4 in.



048-150/AB SERIES

PART NUMBER:	DESCRIPTION:
048-150/34AB	J-Hook, 3/4 in. Galvanized Steel, with angle bracket
048-154/20AB	J-Hook, 2 in. Galvanized Steel, with angle bracket
048-156/40AB	J-Hook, 4 in. Galvanized Steel, with angle bracket

DESCRIPTION

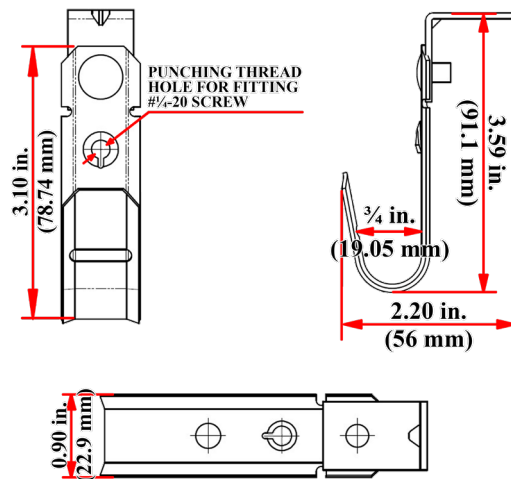
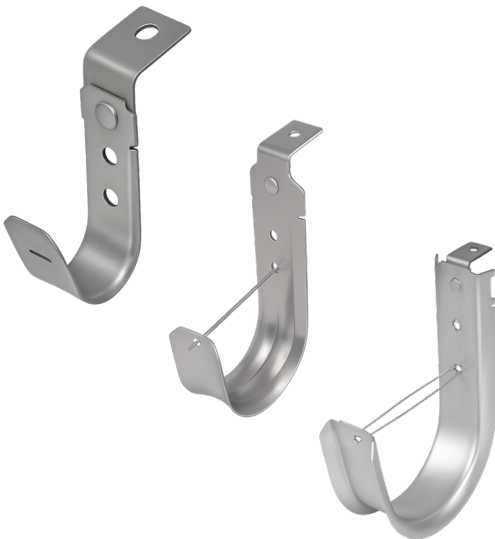
J-Hook, 3/4 in. | 2 in. | 4 in.
Galvanized Steel with Angle Bracket

FEATURES

- Pre-Galvanized Steel
- Finish: No Oil
- For more information on load capacity, see the Load & Mechanical Capacity chart on pg. 2
- Thickness: 0.05 in. (1.27 mm)
- Free of sharp edge and burrs
- Max burr: 0.005 in. (0.127 mm)
- 048-150/34AB & 048-154/20AB:
100x per master box (sold separately)
- 048-156/40AB:
25x per master box (sold separately)

CONSTRUCTION

Hook Diameter:	
048-150/34AB:	0.75 in. (19.05 mm)
048-154/20AB:	2 in. (50.8 mm)
048-156/40AB:	4 in. (101.6 mm)
Height:	
048-150/34AB:	3.59 in. (91.1 mm)
048-154/20AB:	5.24 in. (133 mm)
048-156/40AB:	7.75 in. (196.8 mm)
Width:	
048-150/34AB:	0.90 in. (22.9 mm)
048-154/20AB:	1.44 in. (36.6 mm)
048-156/40AB:	2.02 in. (51.4 mm)
Thickness:	0.05 in. (1.27 mm)



048-150/34AB

VERTICAL CABLE

951.696.7772 California
800.749.2447 Florida
845.391.8318 New York
713.322.7242 Texas

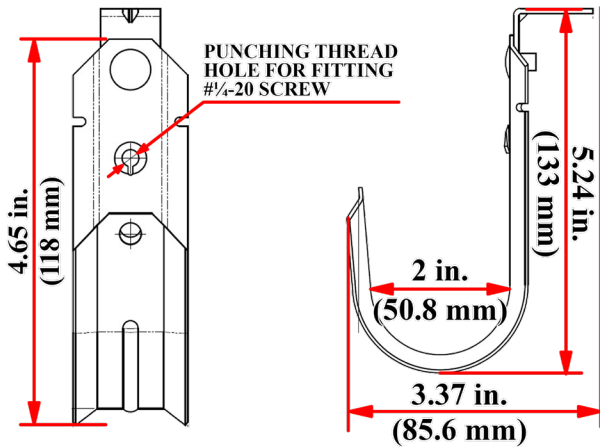


verticalcable.com

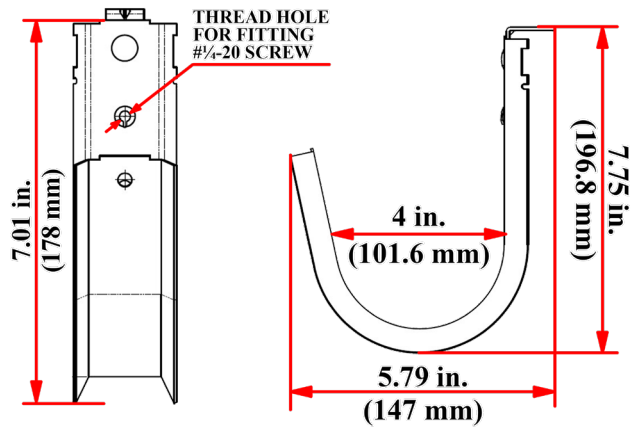
Rev. 10/2025

Subject to change without notice.

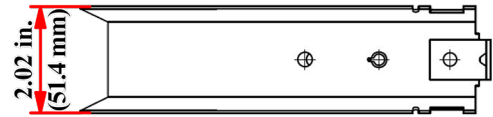
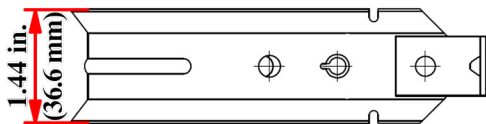
J-HOOK WITH ANGLE BRACKET - 3/4 in. | 2 in. | 4 in.



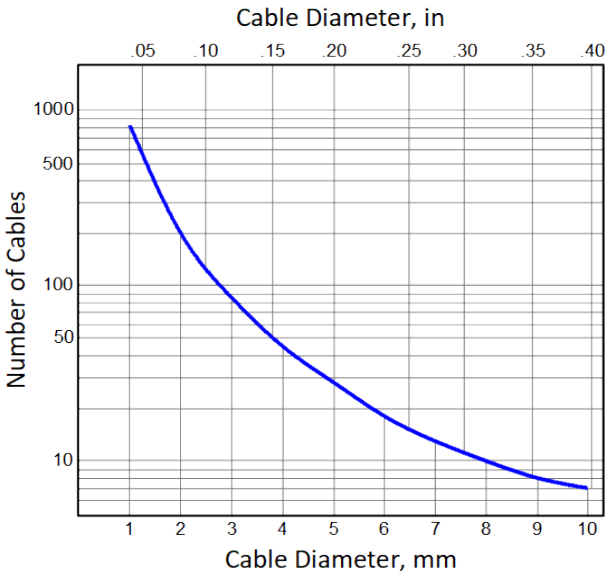
048-154/20AB



048-156/40AB



LOAD & MECHANICAL CAPACITY:



NOTE: The capacity chart provided above shows maximum possible values calculated based on the geometry parameters of the J-hooks. In real life installations, due to imperfection of cable bundles and variable paths cables take within the bundles, actual J-hook's capacity could be lower and reach 50 % of the maximum as the worst-case scenario, the uncertainty grows as the number of cables placed on the J-hook grows. Typical recommended quantity reduction should be 25 % against the values provided in the graphs.

VERTICAL CABLE

951.696.7772 California
800.749.2447 Florida
845.391.8318 New York
713.322.7242 Texas



verticalcable.com

Rev. 10/2025

Subject to change without notice.