



3 RMU 19 IN. SINGLE-SIDED NON-VENTED SHELF

047-WSS-3400

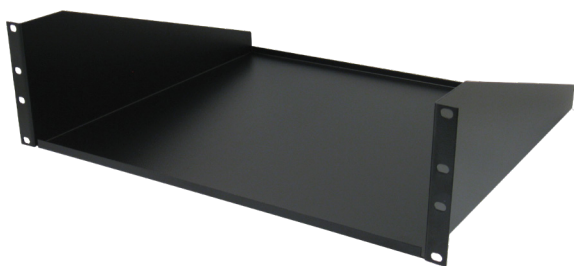
Height	Width	Depth	Color	Weight	Capacity
5.3 in. (134.6 mm)	19 in. (482.6 mm)	15.7 in. (398.8 mm)	Black	4.9 lb (2.2 kg)	44 lb (20 kg)

DESCRIPTION

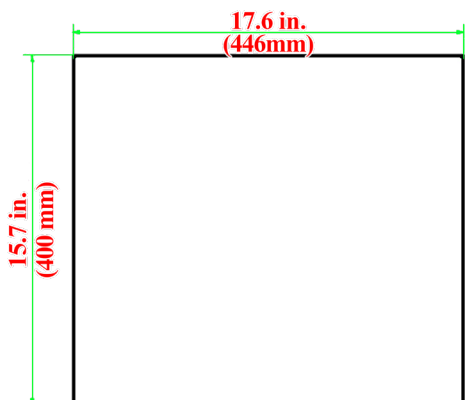
**3 RMU 19 in. Single-Sided, Non-Vented Shelf
Black**

FEATURES

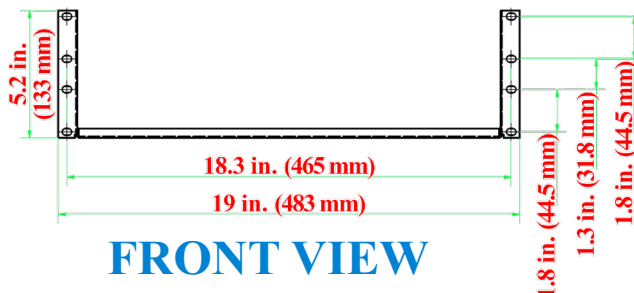
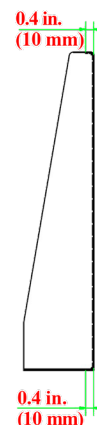
- Fits most standard 19 in. Racks and Wall Mounts
- Made from 1.5 mm EG Steel
- Comes with 8 sets of M6 Washers/Screws/ Cage Nuts
- Loading Capacity 44 lbs
- Suitable for network electronics/components



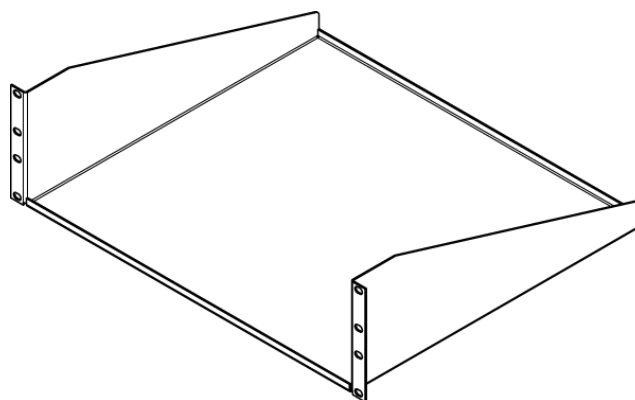
TOP VIEW



SIDE VIEW



FRONT VIEW



VERTICAL CABLE

951.696.7772 California
800.749.2447 Florida
845.391.8318 New York
713.322.7242 Texas

verticalcable.com

Rev. 08/2025

Subject to change without notice.