



# 9 RMU WALL MOUNT OPEN FRAME RACK - SWING OUT

**047-WSM-0926**

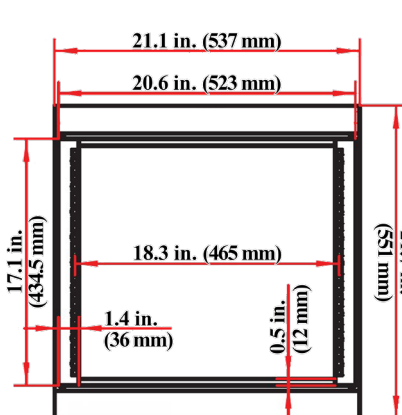
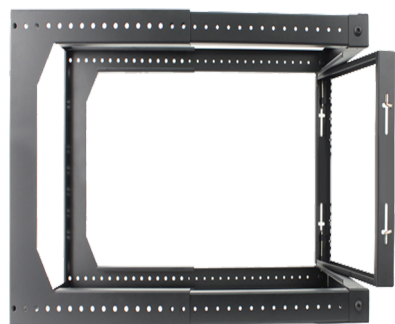
Height	Width	Depth	Color	Weight	Capacity (Open)	Capacity (Closed)
21.7 in. (551.2 mm)	21.7 in. (551.2 mm)	18-30 in. (457.2-762 mm)	Black	27.5 lb (12.5 kg)	33 lb (15 kg)	65 lb (29.5 kg)

## DESCRIPTION

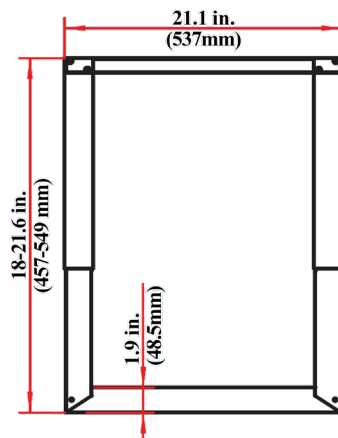
9 RMU Open Wall Mount - Swing Out

## FEATURES

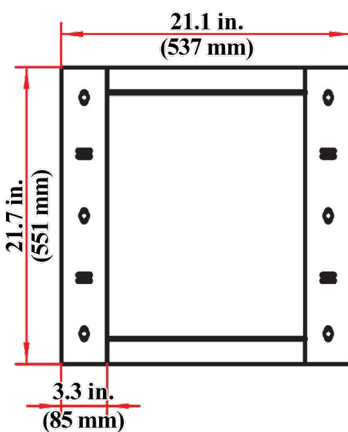
- 9 RMU Rack Capacity
- Swing-Out Design
- Adjustable Mounting Depth from 18 in. to 30 in.
- Steel frame open wall mount with M6 screws and cage nuts
- Comes unassembled
- EIA/ECA-310-E & IEC 60297-3-100 Standards



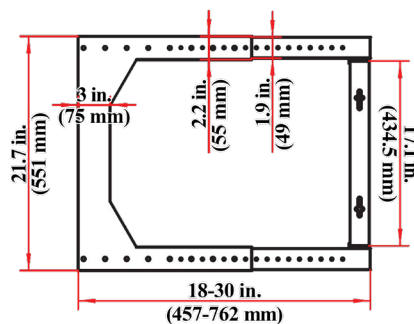
**FRONT VIEW**



**TOP VIEW**



**REAR VIEW**



**SIDE VIEW**

**VERTICAL CABLE**

951.696.7772 California  
800.749.2447 Florida  
845.391.8318 New York  
713.322.7242 Texas

[verticalcable.com](http://verticalcable.com)

Rev. 08/2025

Subject to change without notice.