



# CAT6A RJ45 MODULAR PLUG

## 3 PRONGS 50 $\mu$ " GOLD PLATED

### WITH LOAD BAR **SHIELDED**

**012-021-100**

#### ELECTRICAL

Insulation Resistance:	100m $\Omega$
Termination Resistance:	20m $\Omega$ Max
	After Environmental Testing

#### MECHANICAL

Cable to Plug Tensile Strength:	20 lb
Durability:	200 Mating Cycles

#### MATERIAL

Housing:	Polycarbonate
Color:	Transparent
Contact Blade:	Copper Alloy 3 Prong
Conductor Type:	Solid / Stranded Wire
Conductor Size:	23 AWG
Gold Plating:	50 $\mu$ "

#### OUTER DIAMETER

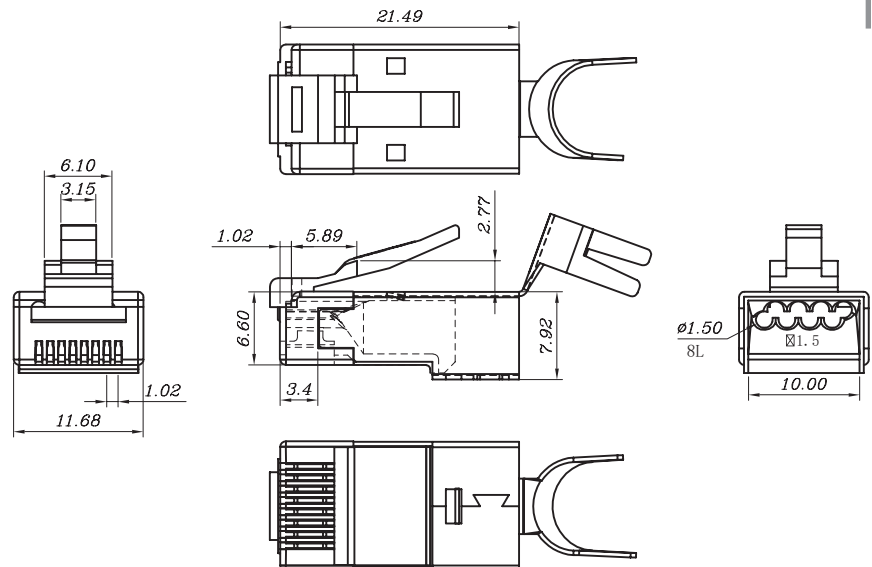
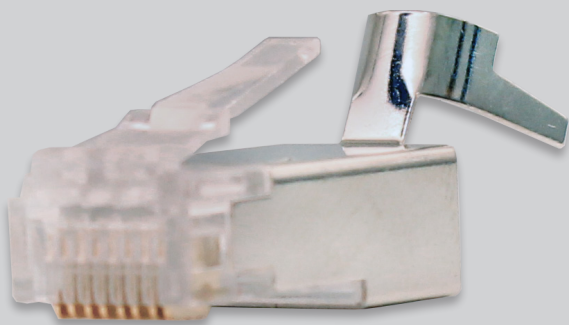
Housing OD:	0.3 in. (7.1 mm)
Insulation OD (max):	0.059 in. (1.5 mm)

## DESCRIPTION

**CAT6A Shielded Plug, RJ45 Modular Plug | (8C), 50  $\mu$ " (Micro-Inches) Gold Plated. Load Bar. 100 per bag.**

## FEATURES

- Compatible with CAT6 / CAT6A CMXF Cable
- Includes Load Bar
- 50 Micro-Inches Gold Plated 3 Prong
- Shielded for Protection Against EMI/RFI
- 23 AWG Cable
- For Round Solid / Stranded Wire (8 Conductor)
- Bulk Packaging



**VERTICAL CABLE**

951.696.7772 California  
800.749.2447 Florida  
845.391.8318 New York  
713.322.7242 Texas

[verticalcable.com](http://verticalcable.com)

Rev. 02/2025

Subject to change without notice.