

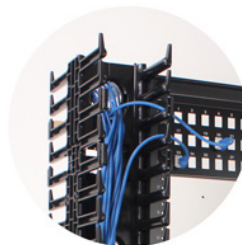
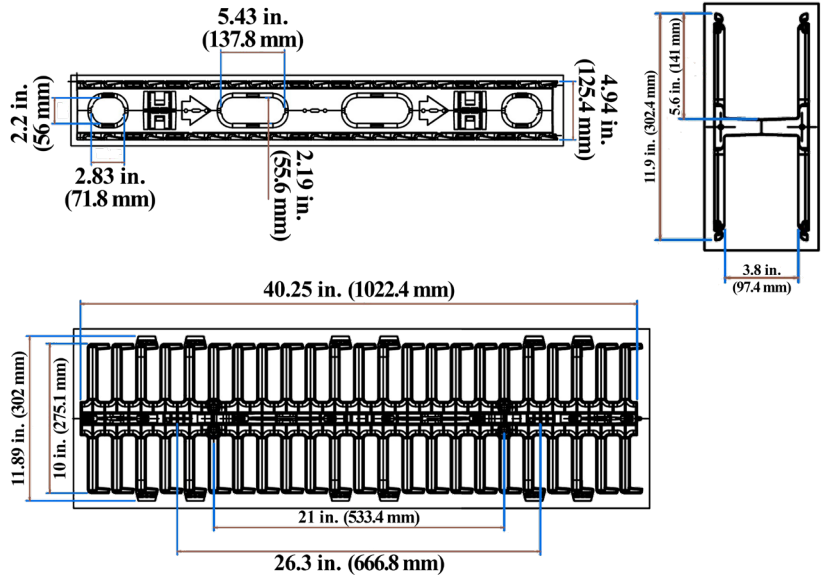
VERTICAL CABLE MANAGER

45 RMU

DOUBLE-SIDED (UNIVERSAL FIT)

047-VMF-4502

Total Height	Section Height	Width	Depth	Color	Weight	Type
78.9 in. (2004.06 mm)	39.45 in. (1002.03 mm)	5 in. (127 mm)	12 in. (304.8 mm)	Black	19.84 lb (19.84 kg)	Single-Sided



■ Connect sections together

■ Covers are included

■ Suitable for copper & fiber



DESCRIPTION

45 RMU Vertical Cable Manager - Plastic, Double-Sided.

FEATURES

- Made of high-quality plastic
- Removable cover for easy access
- Flexible fingers for easy cable feed
- Mounts on either side of a rack (L/R)
- Compatible with most relay racks
- One unit includes two sections (2X 22.5U)
- Couple both sections together to get 45 RMU or use one section with a 20 RMU relay rack
- Includes 4 screws and 2 metal ears and hardware to be installed between two racks (universal fit)

Compatible with Vertical Cable Relay Racks:
Item #: 047-WOS-0220, 047-WOS-0245,
047-WOS-0445



VERTICAL CABLE

951.696.7772 California
800.749.2447 Florida
845.391.8318 New York
713.322.7242 Texas

verticalcable.com

Rev. 07/2025

Subject to change without notice.