

## Surface- and Wall-Mount Enclosures

## Adapter Plate Enclosures - EZX &amp; EZV Series

## Fiber-Management/Splicing Stages for EZX/EZV Series

268-ACC03-11-00

FM Stage with No Splice Holder, No Splice Protection Sleeves.

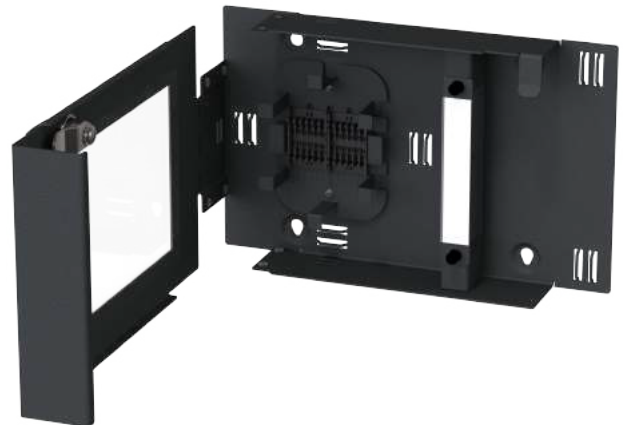
## CHARACTERISTICS:

Splice holder capacity: twelve 2.5-mm splice sleeves, stacked in two rows in six positions.

Material: 0.8 (20-GA) aluminum alloy, powder coating, black (RAL 9005).

Threaded joints: SI (metric).

## EZ-View w/ splicing stage and splice holders



## EZ-Xcess w/ splicing stage and splice holders

