

CAT5E VOICE GRADE CABLE

RISER RATED (CMR) / 50 PAIR

24 AWG 100 CONDUCTOR (UTP)

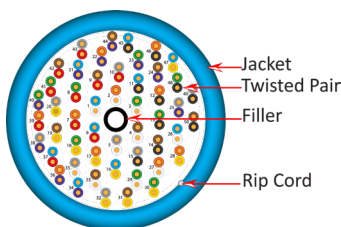


DESCRIPTION

CAT5E Multi-Pair, 350 MHz, CMR Rated/Unshielded
50 Twisted Pairs (UTP) 100 24-AWG
Solid Bare Copper Conductors.

FEATURES

- Supports 10/100/1000BASE-T applications
- Suitable for high speed voice/data applications
- 350-MHz bandwidth supporting wide range of applications
- 24 AWG Solid Copper Conductors
- Easily identifiable pair insulation colors
- Exceeds ANSI/TIA-568.2-D and ISO/IEC 11801 specifications
- CAN/CSA-C22.2 No. 214, RoHS compliant
- Riser Rated (CMR)
- ETL listed



054-SERIES (50 PAIR)

Part Number:	Description:
054-455/BL	CAT5E Multi-Pair 50 Pair, 24 AWG, 1000 ft, Blue 220 lb (99.8 kg)
054-456/WH	CAT5E Multi-Pair 50 Pair, 24 AWG, 1000 ft, White, 500 lb (227 kg)

TRANSMISSION PERFORMANCE

Meets or exceeds ANSI/TIA-568.2-D and ISO/IEC 11801 specifications

CONSTRUCTION

Pairs: 50
Conductors: 100
Filler: Polyvinyl Chloride (PVC)
Screen: Unscreened (UTP)

CONDUCTORS

Material: Solid Bare Annealed Copper
Size: 24 AWG

INSULATION

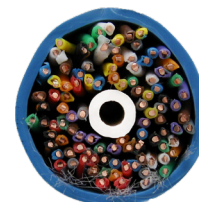
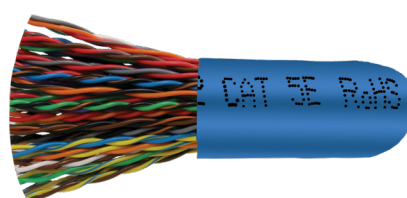
Material: Polyethylene (PE)
Diameter: 0.0354 in. (0.90 mm)
Average thickness: 0.0062 in. (0.16 mm)

JACKET

Material: Polyvinyl Chloride (PVC)
Outer diameter: 0.50 in. (12.50 mm)
Average thickness: 0.0393 in. (1.00 mm)
Marking: VERTICAL 4001453 cETLus VERIFIED CMR
UTP 50PR 24 AWG CAT5E 350 MHz ANSI/
TIA-568.2-D RoHS XXXXFT

WEIGHT

054-455/BL 220 lb (99.8 kg)
054-456/WH 500 lb (227 kg)



VERTICAL CABLE
951.696.7772 California
800.749.2447 Florida
845.391.8318 New York
713.322.7242 Texas



verticalcable.com

Rev. 06/2025

Subject to change without notice.

CAT5E VOICE GRADE CABLE

RISER RATED (CMR) / 50 PAIR

24 AWG 100 CONDUCTOR (UTP)

CABLE CORE

Total Mylar Spiral:	≥125%
Color Coding (4 x 25 Twisted Pairs):	
Pair 1: White/Blue Pair 2: White/Orange Pair 3: White/Green Pair 4: White/Brown Pair 5: White/Gray	
Pair 6: Red/Blue Pair 7: Red/Orange Pair 8: Red/Green Pair 9: Red/Brown Pair 10: Red/Gray	
Pair 11: Black/Blue Pair 12: Black/Orange Pair 13: Black/Green Pair 14: Black/Brown Pair 15: Black/Gray	
Pair 16: Yellow/Blue Pair 17: Yellow/Orange Pair 18: Yellow/Green Pair 19: Yellow/Brown	
Pair 20: Yellow/Gray Pair 21: Purple/Blue Pair 22: Purple/Orange Pair 23: Purple/Green	
Pair 24: Purple/Brown Pair 25: Purple/Gray Pair 26: Blue-White/Brown Pair 27: Orange-White/Brown	
Pair 28: Green-White/Brown Pair 29: Brown-White/Brown Pair 30: Gray-White/Brown Pair 31: Blue-Red/Grey	
Pair 32: Orange-Red/Grey Pair 33: Green-Red/Grey Pair 34: Brown-Red/Grey Pair 35: Gray-Red/Grey	
Pair 36: Blue-Black/Orange Pair 37: Orange-Black/Orange Pair 38: Green-Black/Orange	
Pair 39: Brown-Black/Orange Pair 40: Grey-Black/Orange Pair 41: Blue-Yellow/Blue	
Pair 42: Orange-Yellow/Blue Pair 43: Green-Yellow/Blue Pair 44: Brown-Yellow/Blue	
Pair 45: Grey-Yellow/Blue Pair 46: Blue-Purple/Green Pair 47: Orange-Purple/Green	
Pair 48: Green-Purple/Green Pair 49: Brown-Purple/Green Pair 50: Grey-Purple/Green	

ELECTRICAL

Voltage rating:	60 VRMS
Impedance:	100 ±15Ω
Delay Skew:	≤45 ns/100m
Pair-to-Ground Capacitance Unbalance:	≤330 pF/100m
Conductor Resistance @ 20°C:	95 DC Ω/km
DC Resistance Imbalance:	≤5%

MECHANICAL

Before Tensile Strength (Mpa):	≥13.8 MPa
Elongation After Aging (%):	≥100
Aging Conditions (° C × h):	100x168
Tensile Strength After Aging (Mpa):	≥85% of unaged
Elongation After Aging (%):	≥50% of unaged
Cold Bend (-40±2° Cx4hrs):	No Crack

ENVIRONMENTAL

Operating temperature:	-40 °F–167 °F (-40 °C–75 °C)
------------------------	------------------------------

VERTICAL CABLE
951.696.7772 California
800.749.2447 Florida
845.391.8318 New York
713.322.7242 Texas



verticalcable.com

Rev. 06/2025

Subject to change without notice.