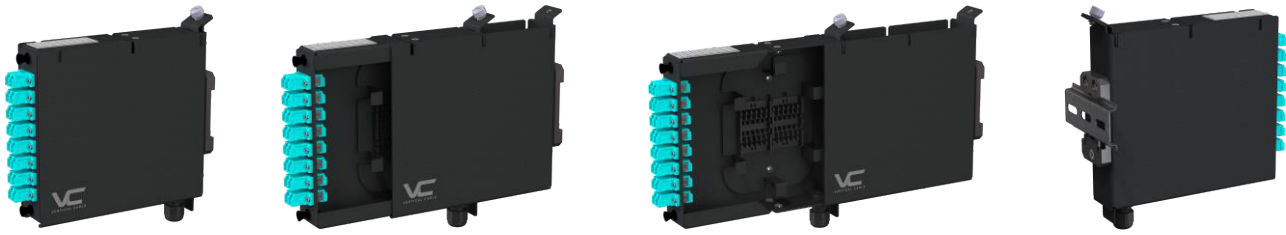


CROSS-CONNECT

DIN-rail Modular Cassette

EZ-Mount Series Cassette



268-EZM01-1A-05

DIN-Rail Modular Cassette, EZ-Mount Series



KITTING

As delivered:

- 1 × bay;
- 1 × cassette;
- 1 × cable entry adapter, blank;
- 1 × cable entry adapter, medium grommet size;
- 1 × fiber management stage, installed;
- 1 × 35-mm DIN rail clip;
- 1 × identification label;
- 2 × nylon cable ties;
- 1 × shipping box.

Not included:

- adapter plates
- splice holders and sleeves (see ACCESSORIES)

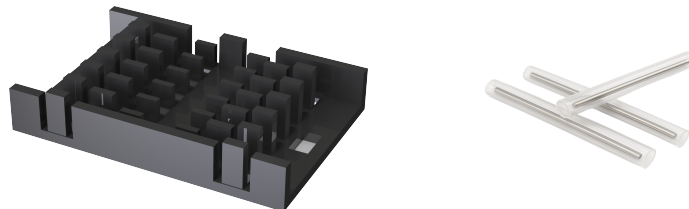
ACCESSORIES

265-HLD01-2B-00

Optical Fiber Splice Holder, Adhesive Mounting, No Sleeves, 12-Fiber Capacity.

265-SLV01-3A-1H

Optical Fiber Splice Protection Sleeve, 2.5 mm×40 mm, pack of 100.



CROSS-CONNECT



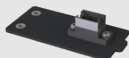
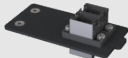


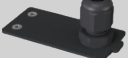
DIN-rail Modular Cassette

EZ-Mount Series Cassette



CABLE ENTRY ADAPTERS

Each EZM cassette is supplied with one blank and one specialized cable entry adapter plates (see product configuration descriptions).
Cable entry adapter plates can be ordered separately, which may add flexibility in changing configuration in the field per project requirements.

BLANK	PASS-THROUGH	MPO ADAPTERS		RUBBER GROMMETS		CABLE GLAND
						
268-EZM01-1A00	268-EZM01-1A01	268-EZM01-1A02	268-EZM01-1A03	268-EZM01-1A04	268-EZM01-1A05	268-EZM01-1A06
	opening size:	connector type:		for cables with ODs:		for cables with ODs:
	40 mm × 20 mm (1.6 in × 0.8 in)	MPO adapter, Type A, compact, flanged, black		≤8 mm (0.3 in)	≤12 mm (0.5 in)*	2 mm–6.5 mm (0.08 in–0.25 in)
		count:		grommet material:		gland form-factor:
		1	2	TPE (thermoplastic elastomer), UL 94 V-2		M12/PG7
		connector mounting orientation:				gland material:
lateral		PA/CR (polyamide/Neoprene)				
plate material:	1.5-mm (15-GA) aluminum alloy					
plate finish:	black powder coating (RAL 9005)					
plate dimensions:	60 mm × 30 mm (2.4 in × 1.2 in)					
mounting:	four M3 CSK machine screws (included)					

* 268-EZM01-1A05 due to its grommet size can be used only in the cassette's top position.

CHARACTERISTICS

Compatibility:	all Vertical Cable 264-MAP and 264-LAP series adapter plates.
Mounting:	35-mm DIN rail via detachable DIN-rail clip.
Materials:	aluminum alloy; black powder coating.
Capacity:	one LGX adapter plate; up to 24 fibers (264-LAP series adapter plates); up to 6 keystone modules (264-MAP01-1A06 adapter plate); 1 or 2 splice holders, 12 fibers per holder, 24 fibers total; 1 or 2 cable entry point adapters (see Accessories above).
Cable management:	cable anchor points (bridge lances); fiber/splice management stage, removable; set of cable ties.
Dimensions:	width: 35 mm (1.4 in) [2 DU]; height: 170 mm (6.7 in); depth: 150 mm (6 in).
Weight:	350 g (12.5 oz).
Compliance:	IEC/EN 60715; DIN 43880; ANSI/TIA-568.3-D; GR-769; Directive 2011/65/EU Am. 2015/863/EU (RoHS2).
DIN-rail clip:	material: fiberglass-reinforced nylon 66 (PA66, GF: 30 %); width: 35 mm; mounting: spring-loaded latch; compliance: Directive 2011/65/EU Am. 2015/863/EU (RoHS2).
Threaded joints:	SI (metric).
Environmental:	operating temperature: -10 °C–60 °C (14 °F–140 °F); storage temperature: -40 °C–70 °C (-40 °F–158 °F); operating humidity: 93 % RH max non-condensing.