

SURFACE-MOUNT PRODUCTS

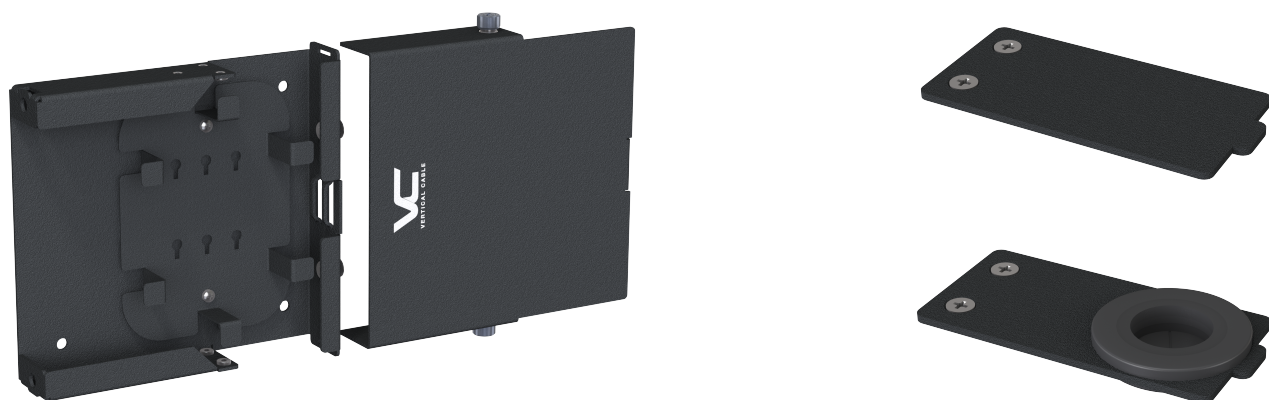


Surface-Mount Modular Cassettes

Connectivity Nodes



251-DCN01-B1B05 Surface-Mount Connectivity Node



KITTING

As-delivered:

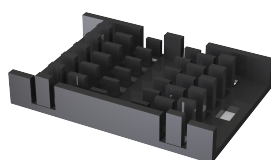
- 1 × base;
- 1 × cover;
- 1 × cable entry adapter, blank;
- 1 × cable entry adapter, medium grommet size;
- 1 × fiber management stage, installed;
- 1 × identification label;
- 2 × nylon cable ties;
- 1 × shipping box.

Not included:

- adapter plates
- splice holders and sleeves (see ACCESSORIES)

ACCESSORIES

- | | |
|-----------------|--|
| 265-HLD01-2B-00 | Optical Fiber Splice Holder, Adhesive Mounting, No Sleeves, 12-Fiber Capacity. |
| 265-SLV01-3A-1H | Optical Fiber Splice Protection Sleeve, 2.5 mm×40 mm, pack of 100. |
| 251-DCN-DINRAIL | DIN-Rail mounting clip, 35-mm. |



SURFACE-MOUNT PRODUCTS



Surface-Mount Modular Cassettes

Connectivity Nodes

CABLE ENTRY ADAPTERS

Cable entry adapter plates can be ordered separately, which may add flexibility in changing configuration in the field per project requirements.



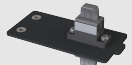
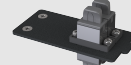


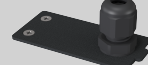
BLANK	PASS-THROUGH	MPO ADAPTERS		RUBBER GROMMETS		CABLE GLAND
						
268-EZM01-1A00	268-EZM01-1A01	268-EZM01-1A02	268-EZM01-1A03	268-EZM01-1A04	268-EZM01-1A05	268-EZM01-1A06
	opening size:	connector type:		for cables with ODs:		for cables with ODs:
	40 mm × 20 mm (1.6 in × 0.8 in)	MPO adapter, Type A, compact, flanged, black		≤8 mm (0.3 in)	≤12 mm (0.5 in)*	≤6.5 mm (0.25 in)
		count:		grommet material:		gland form-factor:
		1	2	TPE (thermoplastic elastomer), UL 94 V-2		M12/PG7
		connector mounting orientation:				gland material:
		lateral				PA/CR (polyamide/Neoprene)

plate material: 1.5-mm (15-GA) aluminum alloy
plate finish: black powder coating (RAL 9005)
plate dimensions: 60 mm × 30 mm (2.4 in × 1.2 in)
mounting: four M3 CSK machine screws (included)

CHARACTERISTICS

Compatibility:	all Vertical Cable 264-MAP and 264-LAP series adapter plates.
Mounting Options:	left-hand/right-hand independent; surface, screw fastening; 35-mm DIN rail, detachable DIN-rail clip.
Cover fixation:	two captive screws.
Materials:	aluminum alloy; black powder coating.
Capacity:	one LGX adapter plate; up to 24 fibers (264-LAP series adapter plates); up to 6 keystone modules (264-MAP01-1A06 adapter plate); 1 or 2 splice holders, 12 fibers per holder, 24 fibers total max; 1 or 2 cable entry point adapters (see Accessories above).
Cable management:	cable anchor point (bridge lance); fiber/splice management stage, removable; set of cable ties.
Dimensions:	W: 30 mm (1.2 in) [2 DU], H: 150 mm (5.9 in), D: 140 mm (5.5 in).
Weight:	240 g (8.5 oz).
Compliance:	IEC/EN 60715; DIN 43880; ANSI/TIA-568.3-D; GR-769; Directive 2011/65/EU Am. 2015/863/EU (RoHS2).
Threaded joints:	SI (metric).
Environmental:	operating temperature: -10 °C–60 °C (14 °F–140 °F); storage temperature: -40 °C–70 °C (-40 °F–158 °F); operating humidity: 93 % RH max non-condensing.