

# 9 RMU OPEN WALL MOUNT FRAME

047-WTH-0918

Height	Width	Adjustable Depth	Mounting Depth	Color	Weight	Capacity
19.5 in.	20 in.	18 - 30 in.	19 in. Rack-mountable	Black	25.35 lb	150 lb



## DESCRIPTION

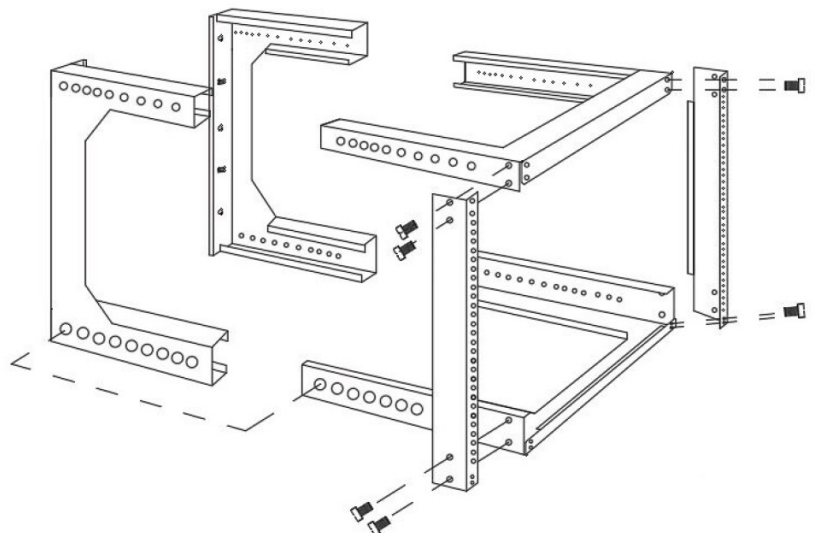
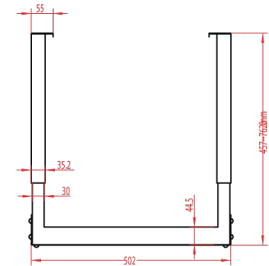
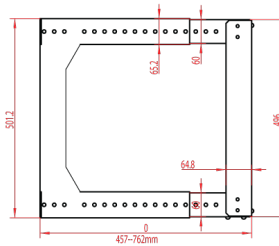
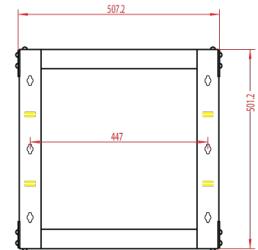
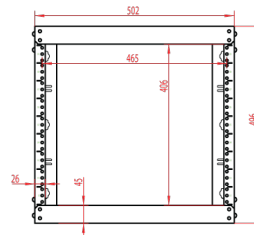
**9 RMU Open Frame Wall-Mount Rack.**  
Adjustable Depth.

## FEATURES

- Modern, sleek design, high quality steel
- 19 inch standard EIA mounting depth
- Black powder finish
- Thread type: 12-24 Tapped
- M6 screws and cage nuts included
- Adjustable depth from 18 in. to 30 in.
- Assembly required, easy installation
- Increased weight capacity, holds up to 150 lbs



9 RMU (502 mm x 457 mm x 496 mm)  
(20 in x 18 in x 19.5 in)



**VERTICAL CABLE**  
951.696.7772 California  
800.749.2447 Florida  
845.391.8318 New York  
713.322.7242 Texas

[verticalcable.com](http://verticalcable.com)

Rev. 05/2025

Subject to change without notice.