

45 RMU OPEN RACK - 4 POST, ADJUSTABLE



047-WOS-0445

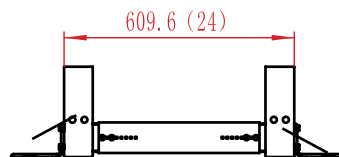
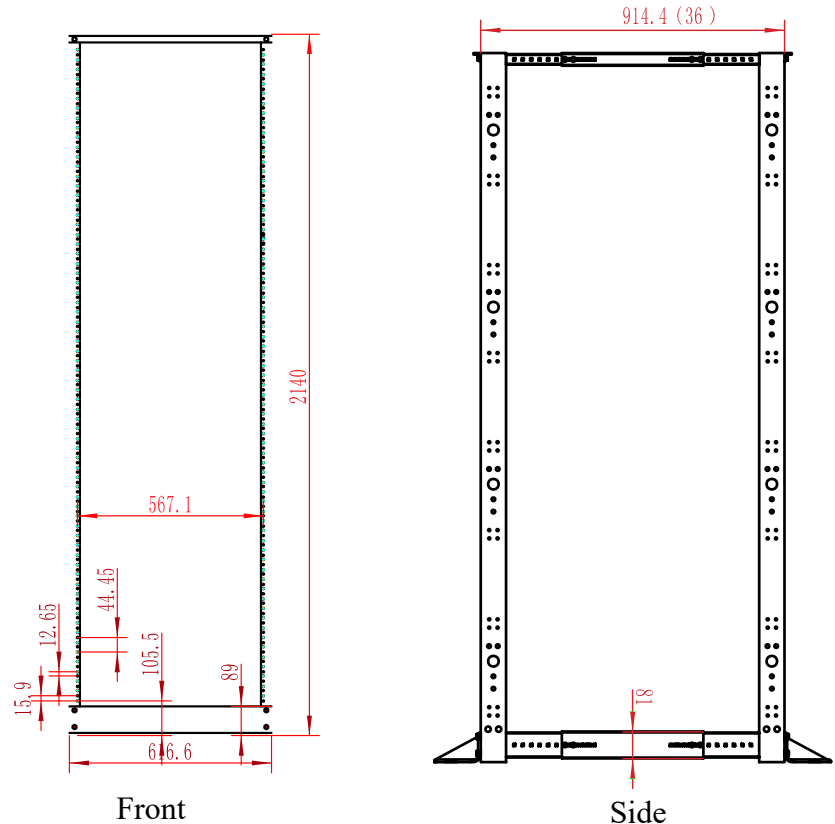
Height	Width	Depth	Color	Weight	Capacity
84 in.	24 in.	24-36 in.	Black	61 lb.	1322 lb.

DESCRIPTION

45 RMU Open Rack, 4-Post, Adjustable Depth

FEATURES

- Steel frame
- Pre drilled holes for #12-24 screws
- Includes 28 screws and washers
- Highly functional and stylish, value packed and multiple-vendor compatibility
- Adjustable depth



What's in the Box:

- (1) #12-24 screws 40 pcs,
- (2) # 12-24 washers 40 pcs,
- (3) 3/8"x1" UNF black bolts + nuts 24pcs both,
- (4) 3/8" flat washers 40pcs
- (5) Assembly Instruction

VERTICAL CABLE

951.696.7772 California
800.749.2447 Florida
845.391.8318 New York
713.322.7242 Texas

verticalcable.com

Rev. 05/2025

Subject to change without notice.