

CAT6A 48 PORT (SHIELDED) PATCH PANEL 19" RACK MOUNTABLE

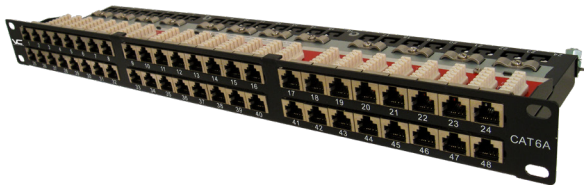


DESCRIPTION

CAT6A Shielded 48 Port Krone Type, Patch Panel, 19" Rackmountable.

FEATURES

- Shielded to protect against EMI, RFI
- High Impact Patch Panel
- Tough Black Painted Finish
- Number Labeled for Easy Identification
- 568A & 568B Wiring Color Codes
- Krone Type Terminals (22-26AWG)
- ISO/IEC 11801 Class EA, ANSI/TIA/EIA 568C.2
- RoHS Compliant
- Accessories: Ground Wire (18 AWG) Green / Yellow striped



042-C6A/48

PANEL

Material	SECC
Thickness	1.2 mm
Plated	Black
Dimension	EIA-310D (1U)

DUST COVER

Material	Polycarbonate 94V-2
----------	---------------------

IDC CONNECTOR

Operating Life	Min. 250 Reterminations
Contact Material	Phospor Bronze - Tin Plated
Contact Thickness	0.5mm
IDC Contact Plating	Tin Plating
IDC Housing	PC + 5~10% Glass Fiber
Compability	22-26 AWG Solid Wire

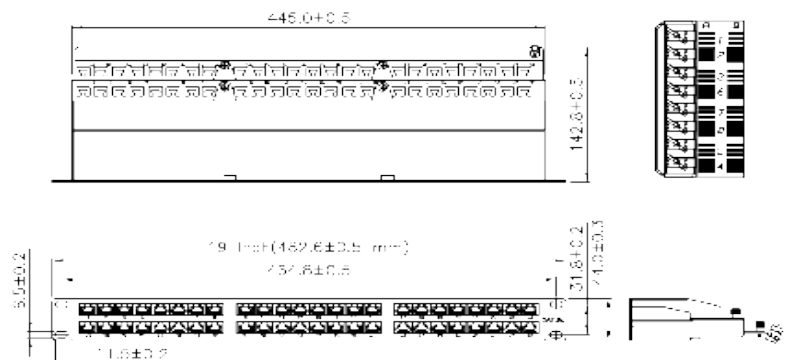
Jack Connector

Operating Life	Min. 750 Insertions
Contact Material	Phosphor Bronze - Nickel Plated
Contact Plating	50μ Gold Plated
Jack Housing	PBT + Glass Fiber
Shield	Nickel Plated over Bronze

Printed Circuit Board

Material	FR4 94V-0
Thickness	1.6 mm

Operating Temp. -10° C - 60° C



VERTICAL CABLE

951.696.7772 California
800.749.2447 Florida
845.391.8318 New York
713.322.7242 Texas



verticalcable.com

Rev. 03/2025

Subject to change without notice.