

CAT6 96 PORT PATCH PANEL 19" RACK MOUNTABLE

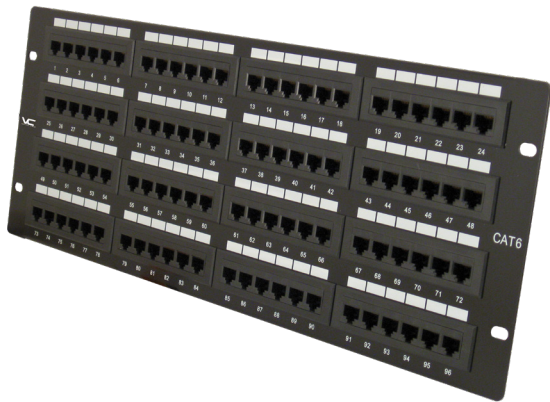


DESCRIPTION

CAT6 96 Port Panel, 110 Type Termination.
19" Rack Mountable.

FEATURES

- High Impact Patch Panel
- Tough Black Painted Finish
- Number Labeled for Easy Identification
- 568A & 568B Wiring Color Codes
- 110 Type Termination
- ISO/IEC 11801, ANSI/TIA/EIA 568C.2
- Accessories: Cable Ties



042-379/96

Panel Housing

Material: SPCC
 Thickness: 1.5mm
 Plated: Black
 Dimension: EIA-310D (4U)

IDC Connector

110 Type
 IDC Housing: PC+Glass Fiber, UL 94V-2
 IDC Terminal: Phosphor Bronze, Tin Plated
 Compatibility: 22-26AWG Solid Wire

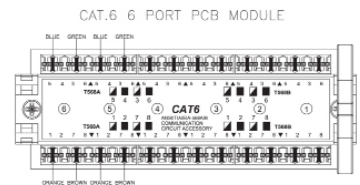
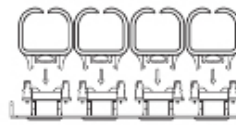
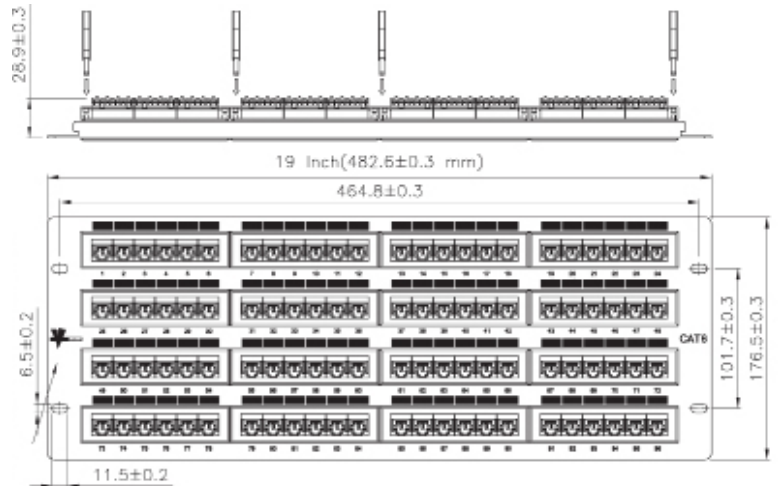
Jack Connector

Contact Material: Phosphor Bronze w/ Nickel Plated
 Contact Finish: 50μ Gold Plated (Plug contact area)
 Jack Housing: ABS, UL 94V-0

Printed Circuit Board

Material: FR4, UL 94V-0

Operating Temp.: -10° to 60° C



VERTICAL CABLE

951.696.7772 California
 800.749.2447 Florida
 845.391.8318 New York
 713.322.7242 Texas



verticalcable.com

Rev. 03/2025

Subject to change without notice.