

CAT6 48 PORT SHIELDED PATCH PANEL 19" RACK MOUNTABLE



VERTICAL CABLE

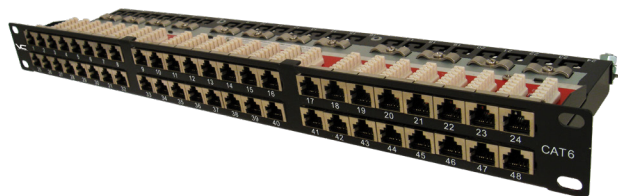
Simply Connect.

DESCRIPTION

CAT6 48 Port Shielded Patch Panel, Krone Type Termination, 19" Rack Mountable.

FEATURES

- Shielded to protect against EMI, RFI
- High Impact Patch Panel
- Tough Black Painted Finish
- Number Labeled for Easy Identification
- 568A & 568B Wiring Color Codes
- Krone Type Termination
- ISO/IEC 11801, ANSI/TIA/EIA 568B.2
- Accessories: Ground Wire and Cable Ties



042-378/S/48

PANEL HOUSING

Material SECC
 Thickness 1.5mm
 Plated Black
 Dimension EIA-310D (1U)
 Dust Cover Yes

IDC

IDC Housing Krone Type
 IDC Terminal PC+Glass, UL 94V-2
 Compability Phosphor Bronze, Tin Plated
 22-26AWG Solid Wire

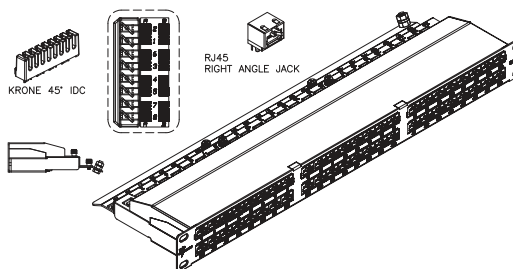
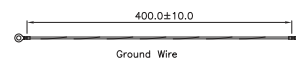
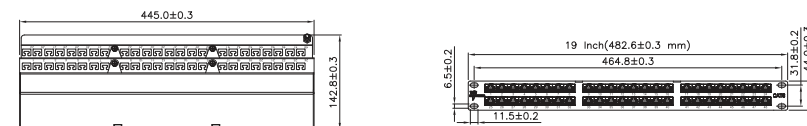
RJ45 JACK

Contact Material Phosphor Bronze w/ Nickel Plated
 Contact Finish 50μ Gold Plated (Plug contact area)
 Jack Housing PBT+Glass Fiber, UL 94V-0
 Shielding Bronze with Nickel Plating

PRINTED CIRCUIT BOARD

Material FR4, UL 94V-0

Operating Temp. -10° to 60° C



VERTICAL CABLE

951.696.7772 California
 800.749.2447 Florida
 845.391.8318 New York
 713.322.7242 Texas



verticalcable.com

Rev. 03/2025

Subject to change without notice.