

CAT6 24 PORT (SHIELDED) PATCH PANEL 19" RACK MOUNTABLE

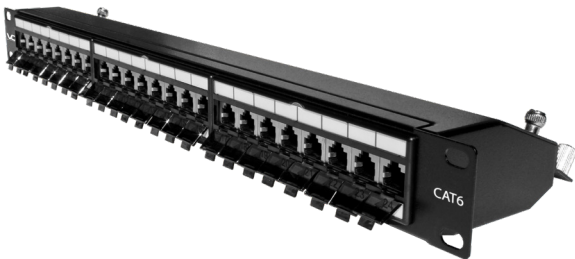


DESCRIPTION

**CAT6 Shielded 24 Port Patch Panel.
Krone Type Termination.
19" Rack Mountable.**

FEATURES

- Shielded to protect against EMI, RFI
- High Impact Patch Panel
- Tough Black Painted Finish
- Number Labeled for Easy Identification
- 568A & 568B Wiring Color Codes
- Krone Type Termination
- ISO/IEC 11801, ANSI/TIA/EIA 568-B.2
- Accessories: Ground Wire and Cable Ties



042-377/S/24

PANEL HOUSING

Material:	SECC
Thickness:	1.2mm
Plated:	Black
Dimension:	EIA-310D (1U)
Dust Cover:	Yes

IDC

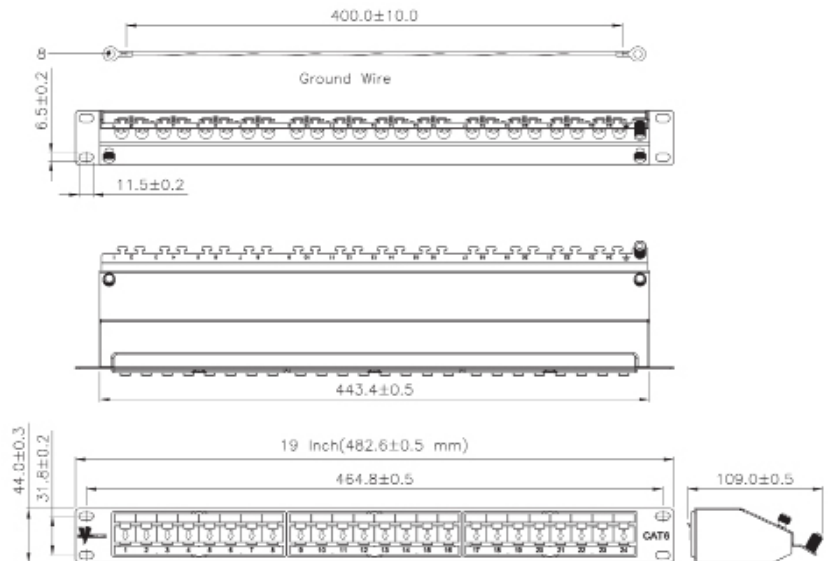
IDC Housing:	Krone Type
IDC Terminal:	PC+Glass, UL 94V-2
Compatibility:	Phosphor Bronze, Tin Plated
	22-26AWG Solid Wire

RJ45 JACK

Contact Material:	Phosphor Bronze w/ Nickel Plated
Contact Finish:	50μ Gold Plated (Plug contact area)
Jack Housing:	PBT-Glass Fiber, UL 94V-0
Shielding:	Bronze with Nickel Plating

PRINTED CIRCUIT BOARD

Material:	FR4, UL 94V-0
Operating Temp.:	-10° to 60° C



VERTICAL CABLE

951.696.7772 California
800.749.2447 Florida
845.391.8318 New York
713.322.7242 Texas



verticalcable.com

Rev. 03/2025

Subject to change without notice.