

CAT5E 24 PORT (SHIELD) PATCH PANEL

19" RACK MOUNTABLE

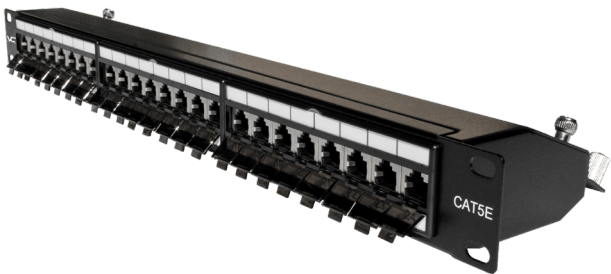


DESCRIPTION

CAT5E Shielded 24 Port Patch Panel. Krone Type Termination. 19" Rack Mountable.

FEATURES

- Shielded to protect against EMI, RFI
- High Impact Patch Panel
- Tough Black Painted Finish
- Number Labeled for Easy Identification
- 568A & 568B Wiring Color Codes
- Krone Type Termination
- ISO/IEC 11801, ANSI/TIA/EIA 568-B.2



041-372/S/24

Panel Housing

Material	SECC
Thickness	1.2mm
Plated	Black
Dimension	EIA-310D (1U)
Dust Cover	Yes

IDC

IDC Housing	Krone Type
IDC Terminal	PC+Glass, UL 94V-2
Compatibility	Phosphor Bronze, Tin Plated 22-26AWG Solid Wire

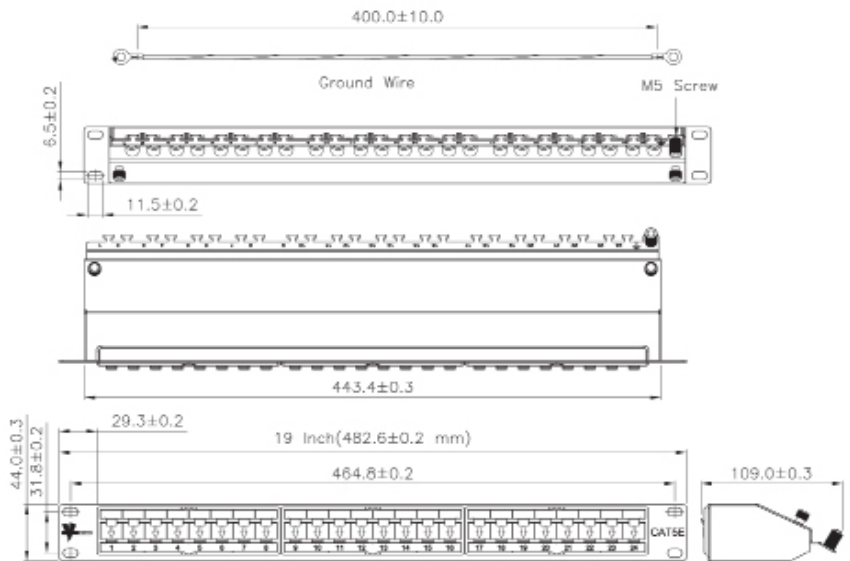
RJ45 Jack

Contact Material	Phosphor Bronze w/ Nickel Plated
Contact Finish	50μ Gold Plated (Plug contact area)
Jack Housing	PBT-Glass Fiber, UL 94V-0
Shielding	Bronze with Nickel Plating

Printed Circuit Board

Material	FR4, UL 94V-0
----------	---------------

Operating Temp. -10° to 60° C
Accessories: Ground Wire and Cable Ties



VERTICAL CABLE

951.696.7772 California
800.749.2447 Florida
845.391.8318 New York
713.322.7242 Texas



verticalcable.com

Rev. 03/2025

Subject to change without notice.