

Splicing

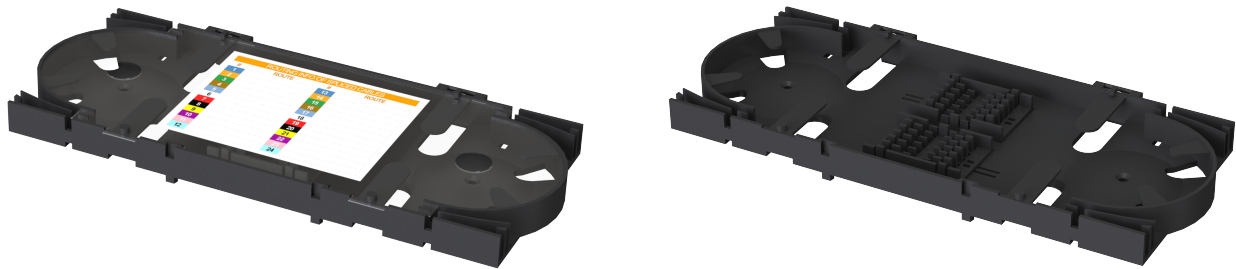
Splice Trays/Cassettes - Compact

265-CAS01-1B200 Optical fiber splice tray, compact, stackable, 24-fiber, black



Splice Trays/Cassettes - Standard

265-CAS01-2B200 Optical fiber splice tray, standard, stackable, 24-fiber, transparent cover, black



CHARACTERISTICS

	265-CAS01-1	265-CAS01-2
	24 fibers (capacity)	24 fibers (capacity)
Features:	<ul style="list-style-type: none"> - two splice holders; - fiber-management and slack storage mechanism; - cable anchoring points; - vertically stackable. 	<ul style="list-style-type: none"> - two splice holders; - fiber-management and slack storage mechanism; - cable anchoring points; - vertically stackable; - transparent cover; - administration ID label.
Dimensions:	140 mm × 100 mm × 12 mm (5.5 in × 4.0 in × 0.5 in);	225 mm × 105 mm × 12 mm (8.9 in × 4.1 in × 0.5 in)
Weight:		
Compatibility:	VC _{fiber} 267-RES, 267-REB, 268-STD, 268-EZX, 268-EZV Series	VC _{fiber} 267-RES, 267-REB Series

Compatible splicing: fusion splice, heat-shrink protection sleeves.

Materials: body: ABS (acrylonitrile butadiene styrene);
splice holder: PP (polypropylene).

Accessories: 2 white nylon cable ties;
4 double-sided adhesive pads;
2 sets of mounting machine screws, nuts, spacers (for hardware units equipped with 45-mm or 145-mm ctc mounting points).

Environmental: operating temperature: -20 °C—+70 °C (-4 °F—+158 °F);
operating humidity: ≤95 % RH non-condensing.

Compliance: Telcordia GR-771-CORE;
RoHS.