

CAT5E RJ45 MODULAR PLUG

8P8C 3 PRONG 50 μ" GOLD PLATED SHIELDED EASY FEED DESIGN



011-019/EZF-100

ELECTRICAL

Voltage Rating:	250 VAC RMS
Current Rating:	2 Amps
Insulation Resistance:	500m Ω
Termination Resistance:	35m Ω Max

MECHANICAL

Cable to Plug Tensile Strength:	20 lb
Durability:	500 Mating Cycles

MATERIAL

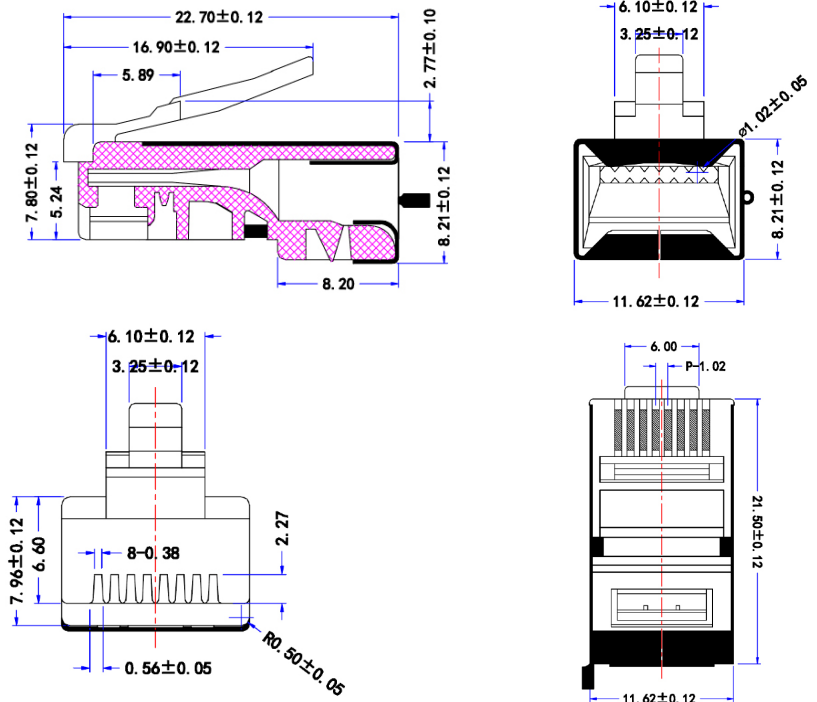
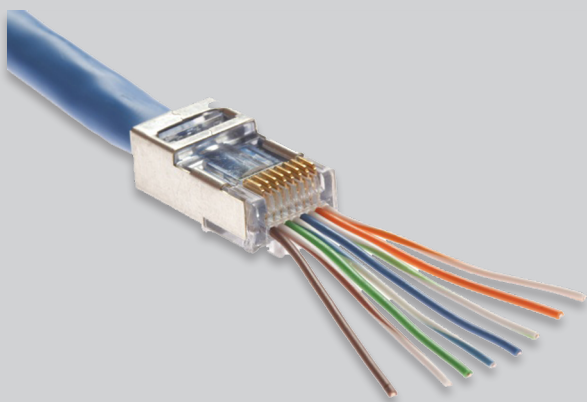
Housing:	Polycarbonate UL94V-2
Shield:	Over Housing
Color:	Transparent
Contact Blade:	Copper Alloy 3 Prong
Conductor Type:	Solid/Stranded Wire
Conductor Size:	24 AWG - 26 AWG
Insulation Size:	0.040 in. (1.02 mm)
Gold Plating:	50 μ"

DESCRIPTION

CAT5E Easy Feed Plug, RJ45 Shielded Modular Plug | For Solid/Stranded Cable (8C), 50 μ" (Micro-Inches) Gold Plated. 100 per bag.

FEATURES

- CAT5E Compatibility
- Easy Feed Design
- 50 Micro-Inches Gold Plated 3 Prong
- Shielded for Protection Against EMI/RFI
- 24 AWG - 26 AWG Cable
- For Round Solid / Stranded CAT5E (8 Conductor)
- Bulk Packaging



VERTICAL CABLE

951.696.7772 California
 800.749.2447 Florida
 845.391.8318 New York
 713.322.7242 Texas

verticalcable.com

Rev. 02/2025

Subject to change without notice.