

CATEGORY 6A PATCH CORD

STRANDED 28 AWG

UTP (SLIM)



DESCRIPTION

CAT6A Patch Cords, Slim, Stranded 28-AWG UTP, 8P8C ("RJ45") Modular Plugs.

FEATURES

- Stranded Bare Copper Conductors
- Supports IEEE 802.3at (PoE+ Type 2)
- Unshielded 8P8C ("RJ45") Modular Plugs
- 50-µin Gold Plated Contacts
- Flame-Retardant PVC Jacket
- CM Rated, UL Listed, RoHS Compliant
- Meets or Exceeds Specifications of ISO/IEC 11801 and ANSI/TIA/568.2 Standards
- T568B Wiring Scheme

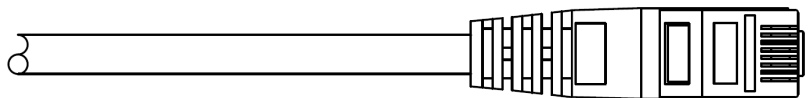
077 SERIES

CHARACTERISTICS	
PERFORMANCE: Meets or exceeds ANSI/TIA-568.2-D and ISO/IEC 118011 specifications.	
CONSTRUCTION	
Media:	4 unshielded twisted pairs, 8 stranded conductors
Wiring scheme:	ANSI/TIA-568.2: T568B ISO/IEC 11801: 8-position 1-2/3-6/4-5/7-8 pin/pair assignment
CONDUCTORS	
Size:	stranded 28 AWG
Material:	bare copper
INSULATION	
Material:	high-density polyethylene (HDPE)
JACKET	
Material:	Polyvinylchloride (PVC), flame-retardant
Diameter:	0.15 in. (3.8 mm)
PLUGS	
Type:	8P8C modular plugs ("RJ45")
Housing:	Flame-retardant polycarbonate (PC), 94V-0
Contacts:	50-µin gold plated
ELECTRICAL	
100 % Test:	(open. short, miss wire)
Contact Resistance:	2 Ohm Max
Insulation Resistance:	10 M Ohm Min
Hi-Pot:	300 V DC/10ms
JACKET MARKING:	E468535 (UL) C (UL) CM CAT6A UTP 28AWG *4P CABLE 10GIG UTP CAT6A 4PR 28AWG Stranded ANSI/TIA-568-D.2 & ISO/IEC 11801 ROHS Compliant

077-XXXX/XBK	Black
077-XXXX/XBL	Blue
077-XXXX/XGR	Green
077-XXXX/XGY	Gray
077-XXXX/XOR	Orange
077-XXXX/XPR	Purple
077-XXXX/XRD	Red
077-XXXX/XWH	White
077-XXXX/XYL	Yellow

Length	Weight
0.5 ft	0.03 lb
1 ft	0.04 lb
2 ft	0.06 lb
3 ft	0.07 lb
5 ft	0.08 lb

7 ft	0.11 lb
10 ft	0.15 lb
14 ft	0.20 lb
25 ft	0.31 lb
50 ft	0.60 lb



VERTICAL CABLE

951.696.7772 California
800.749.2447 Florida
845.391.8318 New York
713.322.7242 Texas



verticalcable.com

Rev. 6/2024

Subject to change without notice.

Cable ID	Summary	Test Limit	Length	Headroom	Date / Time
CAT6A SLIM 077 05	PASS	TIA Cat 6A Channel	0 ft	21.1 dB (NEXT)	01/29/2021 02:29 PM
CAT6A SLIM 077 1	PASS	TIA Cat 6A Channel	1 ft	22.1 dB (NEXT)	01/29/2021 02:31 PM
CAT6A SLIM 077 2	PASS	TIA Cat 6A Channel	2 ft	19.4 dB (NEXT)	01/29/2021 02:35 PM
CAT6A SLIM 077 3	PASS	TIA Cat 6A Channel	3 ft	22.4 dB (NEXT)	01/29/2021 02:36 PM
CAT6A SLIM 077 5	PASS	TIA Cat 6A Channel	5 ft	9.8 dB (NEXT)	01/29/2021 02:37 PM
CAT6A SLIM 077 7	PASS	TIA Cat 6A Channel	7 ft	15.7 dB (NEXT)	01/29/2021 02:39 PM
CAT6A SLIM 077 10	PASS	TIA Cat 6A Channel	10 ft	10.2 dB (NEXT)	01/29/2021 02:40 PM
CAT6A SLIM 077 14	PASS	TIA Cat 6A Channel	13 ft	6.1 dB (NEXT)	01/29/2021 02:41 PM
CAT6A SLIM 077 25	PASS	TIA Cat 6A Channel	25 ft	11.2 dB (NEXT)	01/29/2021 04:04 PM

Channel Standards

In a network, the channel is the connection from one active device to another, including any patch cords and equipment cords. In the data center, this could be from an access switch to a server and would include any patch cords used for cross-connects or interconnects between the two. In the LAN, the channel could be the connection from a distribution switch in a telecommunications room all the way to the network card in a laptop.

Based on worse-case scenario assumptions, industry standards specify the performance of a channel for a given application. For fiber, that's primarily insertion loss. For copper, it's quite a bit more—insertion loss, return loss, crosstalk (NEXT, FEXT, ELFEXT, ANEXT, etc.), propagation delay, DC resistance and more.

Channel standards also specify the overall length of a channel for a specific applications and cabling media. For example, standards specify that a 10GBASE-T Category 6A channel should not exceed 100 meters, and a 10BASE-SR OM4 multimode fiber channel should not exceed 400 meters.

Source: <https://www.flukenetworks.com/blog/cabling-chronicles/whats-difference-between-channel-and-component-standards>

Total Length:	66 ft
Number of Reports:	9
Number of Passing Reports:	9
Number of Failing Reports:	0
Number of Warning Reports:	0
Documentation Only:	0



Cable ID: CAT6A SLIM 077 05

Test Limit: TIA Cat 6A Channel

Limits Version: V7.5

Date / Time: 01/29/2021 02:29:50 PM

Operator: VERTICAL TECH

Headroom 21.1 dB (NEXT 3,6-4,5)

Cable Type: Cat 6A U/UTP

NVP: 68.2%

Main: Versiv

S/N: 3676207

Software Version: V6.5 Build 5

Calibration Date: 01/26/2017

Adapter: DSX-5000 (DSX-CHA004)

S/N: 3681012

Remote: Versiv

S/N: 3687009

Software Version: V6.5 Build 5

Calibration Date: 01/26/2017

Adapter: DSX-5000R (DSX-CHA004)

S/N: 3681674

Test Summary: PASS

Length (ft), Limit 328	[Pair 3,6]	0
Prop. Delay (ns), Limit 555	[Pair 1,2]	1
Delay Skew (ns), Limit 50	[Pair 1,2]	1
Resistance (ohms)	[Pair 7,8]	0.01
Insertion Loss Margin (dB)	[Pair 1,2]	13.0
Frequency (MHz)	[Pair 1,2]	40.3
Limit (dB)	[Pair 1,2]	13.1

Worst Case Margin Worst Case Value

PASS	MAIN	SR	MAIN	SR
Worst Pair	3,6-4,5	3,6-4,5	3,6-4,5	3,6-4,5
NEXT (dB)	21.1	21.4	27.6	26.7
Freq. (MHz)	3.1	3.4	500.0	500.0
Limit (dB)	64.8	64.2	26.1	26.1
Worst Pair	3,6	3,6	3,6	3,6
PS NEXT (dB)	22.2	21.7	29.5	28.6
Freq. (MHz)	3.4	3.4	500.0	500.0
Limit (dB)	61.7	61.7	23.2	23.2

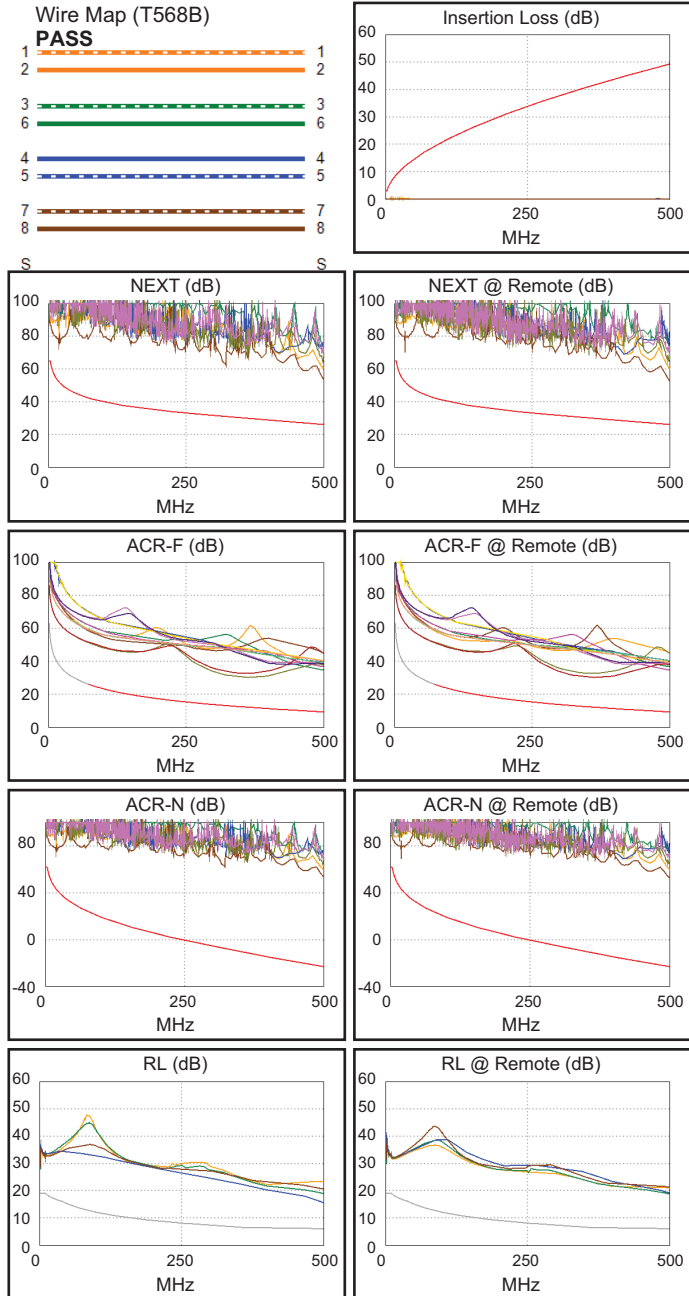
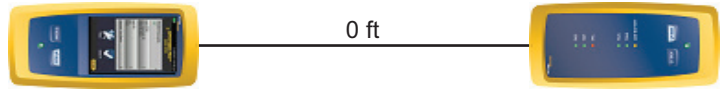
PASS	MAIN	SR	MAIN	SR
Worst Pair	3,6-4,5	4,5-3,6	3,6-4,5	4,5-3,6
ACR-F (dB)	17.9	17.9	18.1	18.1
Freq. (MHz)	355.0	355.0	367.0	367.0
Limit (dB)	12.3	12.3	12.0	12.0
Worst Pair	4,5	3,6	4,5	3,6
PS ACR-F (dB)	20.8	20.7	20.9	21.1
Freq. (MHz)	355.0	355.0	367.0	375.0
Limit (dB)	9.3	9.3	9.0	8.8

N/A	MAIN	SR	MAIN	SR
Worst Pair	3,6-4,5	3,6-4,5	3,6-4,5	3,6-4,5
ACR-N (dB)	24.8	25.2	76.9	76.0
Freq. (MHz)	3.1	3.4	500.0	500.0
Limit (dB)	61.1	60.4	-23.2	-23.2
Worst Pair	3,6	3,6	3,6	3,6
PS ACR-N (dB)	26.0	25.5	78.8	77.9
Freq. (MHz)	3.4	3.4	500.0	500.0
Limit (dB)	57.9	57.9	-26.1	-26.1

N/A	MAIN	SR	MAIN	SR
Worst Pair	3,6	3,6	4,5	3,6
RL (dB)	8.8	10.7	9.5	12.6
Freq. (MHz)	1.0	1.0	500.0	500.0
Limit (dB)	19.0	19.0	6.0	6.0

Compliant Network Standards:

10BASE-T	100BASE-TX	100BASE-T4
1000BASE-T	2.5GBASE-T	5GBASE-T
10GBASE-T	ATM-25	ATM-51
ATM-155	100VG-AnyLan	TR-4
TR-16 Active	TR-16 Passive	





Cable ID: CAT6A SLIM 077 1

Test Limit: TIA Cat 6A Channel

Limits Version: V7.5

Date / Time: 01/29/2021 02:31:45 PM

Operator: VERTICAL TECH

Headroom 22.1 dB (NEXT 3,6-4,5)

Cable Type: Cat 6A U/UTP

NVP: 68.2%

Main: Versiv

S/N: 3676207

Software Version: V6.5 Build 5

Calibration Date: 01/26/2017

Adapter: DSX-5000 (DSX-CHA004)

S/N: 3681012

Test Summary: PASS

Remote: Versiv

S/N: 3687009

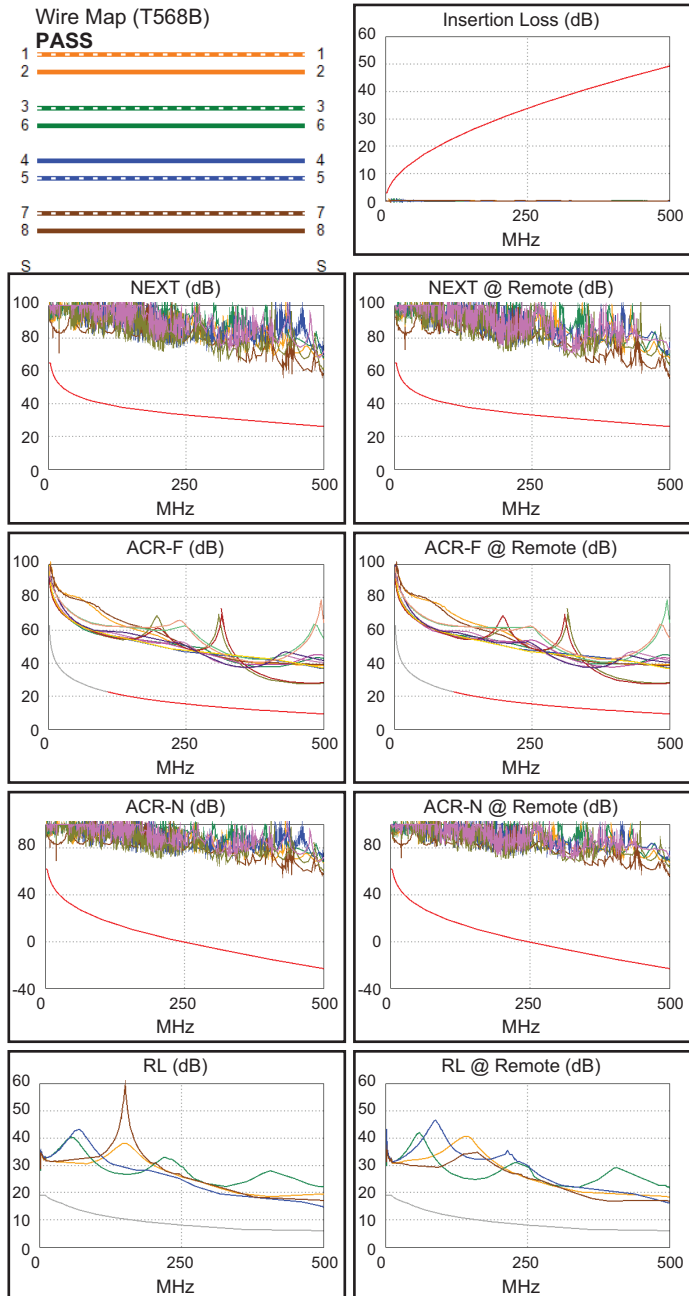
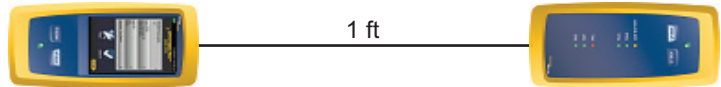
Software Version: V6.5 Build 5

Calibration Date: 01/26/2017

Adapter: DSX-5000R (DSX-CHA004)

S/N: 3681674

Length (ft), Limit 328	[Pair 1,2]	1
Prop. Delay (ns), Limit 555	[Pair 1,2]	1
Delay Skew (ns), Limit 50	[Pair 1,2]	0
Resistance (ohms)	[Pair 7,8]	0.15
Insertion Loss Margin (dB)	[Pair 7,8]	36.8
Frequency (MHz)	[Pair 7,8]	295.0
Limit (dB)	[Pair 7,8]	37.0



Worst Case Margin Worst Case Value

PASS	MAIN	SR	MAIN	SR
Worst Pair	3,6-4,5	3,6-4,5	3,6-4,5	3,6-4,5
NEXT (dB)	22.1	24.2	30.9	30.4
Freq. (MHz)	19.0	18.5	497.0	499.0
Limit (dB)	52.0	52.2	26.2	26.1
Worst Pair	3,6	3,6	3,6	3,6
PS NEXT (dB)	24.6	24.9	32.3	32.2
Freq. (MHz)	19.0	3.9	497.0	499.0
Limit (dB)	49.3	60.8	23.3	23.3

PASS	MAIN	SR	MAIN	SR
Worst Pair	3,6-4,5	4,5-3,6	3,6-4,5	4,5-3,6
ACR-F (dB)	17.5	17.4	17.7	17.7
Freq. (MHz)	468.0	460.0	476.0	476.0
Limit (dB)	9.9	10.0	9.7	9.7
Worst Pair	4,5	3,6	4,5	3,6
PS ACR-F (dB)	20.1	20.0	20.6	20.2
Freq. (MHz)	445.0	460.0	476.0	476.0
Limit (dB)	7.3	7.0	6.7	6.7

N/A	MAIN	SR	MAIN	SR
Worst Pair	3,6-4,5	3,6-4,5	3,6-4,5	3,6-4,5
ACR-N (dB)	27.8	28.4	80.1	79.6
Freq. (MHz)	3.1	3.9	497.0	499.0
Limit (dB)	61.1	59.2	-23.0	-23.1
Worst Pair	3,6	3,6	3,6	3,6
PS ACR-N (dB)	28.9	28.8	81.4	81.5
Freq. (MHz)	3.3	3.3	497.0	499.0
Limit (dB)	58.2	58.2	-25.8	-26.0

N/A	MAIN	SR	MAIN	SR
Worst Pair	4,5	4,5	4,5	4,5
RL (dB)	8.7	10.1	8.7	10.1
Freq. (MHz)	500.0	500.0	500.0	500.0
Limit (dB)	6.0	6.0	6.0	6.0

Compliant Network Standards:
 10BASE-T 100BASE-TX 100BASE-T4
 1000BASE-T 2.5GBASE-T 5GBASE-T
 10GBASE-T ATM-25 ATM-51
 ATM-155 100VG-AnyLan TR-4
 TR-16 Active TR-16 Passive



Cable ID: CAT6A SLIM 077 2

Test Limit: TIA Cat 6A Channel

Limits Version: V7.5

Date / Time: 01/29/2021 02:35:45 PM

Operator: VERTICAL TECH

Headroom 19.4 dB (NEXT 3,6-4,5)

Cable Type: Cat 6A U/UTP

NVP: 68.2%

Main: Versiv

S/N: 3676207

Software Version: V6.5 Build 5

Calibration Date: 01/26/2017

Adapter: DSX-5000 (DSX-CHA004)

S/N: 3681012

Test Summary: PASS

Remote: Versiv

S/N: 3687009

Software Version: V6.5 Build 5

Calibration Date: 01/26/2017

Adapter: DSX-5000R (DSX-CHA004)

S/N: 3681674

Length (ft), Limit 328	[Pair 1,2]	2
Prop. Delay (ns), Limit 555	[Pair 1,2]	3
Delay Skew (ns), Limit 50	[Pair 1,2]	0
Resistance (ohms)	[Pair 7,8]	0.30
Insertion Loss Margin (dB)	[Pair 1,2]	46.8
Frequency (MHz)	[Pair 1,2]	466.0
Limit (dB)	[Pair 1,2]	47.4

Worst Case Margin Worst Case Value

PASS	MAIN	SR	MAIN	SR
Worst Pair	1,2-3,6	3,6-4,5	3,6-4,5	3,6-4,5
NEXT (dB)	24.3	19.4	32.3	28.8
Freq. (MHz)	3.4	15.5	498.0	500.0
Limit (dB)	64.2	53.5	26.1	26.1
Worst Pair	3,6	3,6	3,6	3,6
PS NEXT (dB)	23.1	21.3	30.9	30.8
Freq. (MHz)	3.5	15.5	498.0	500.0
Limit (dB)	61.5	50.8	23.3	23.2

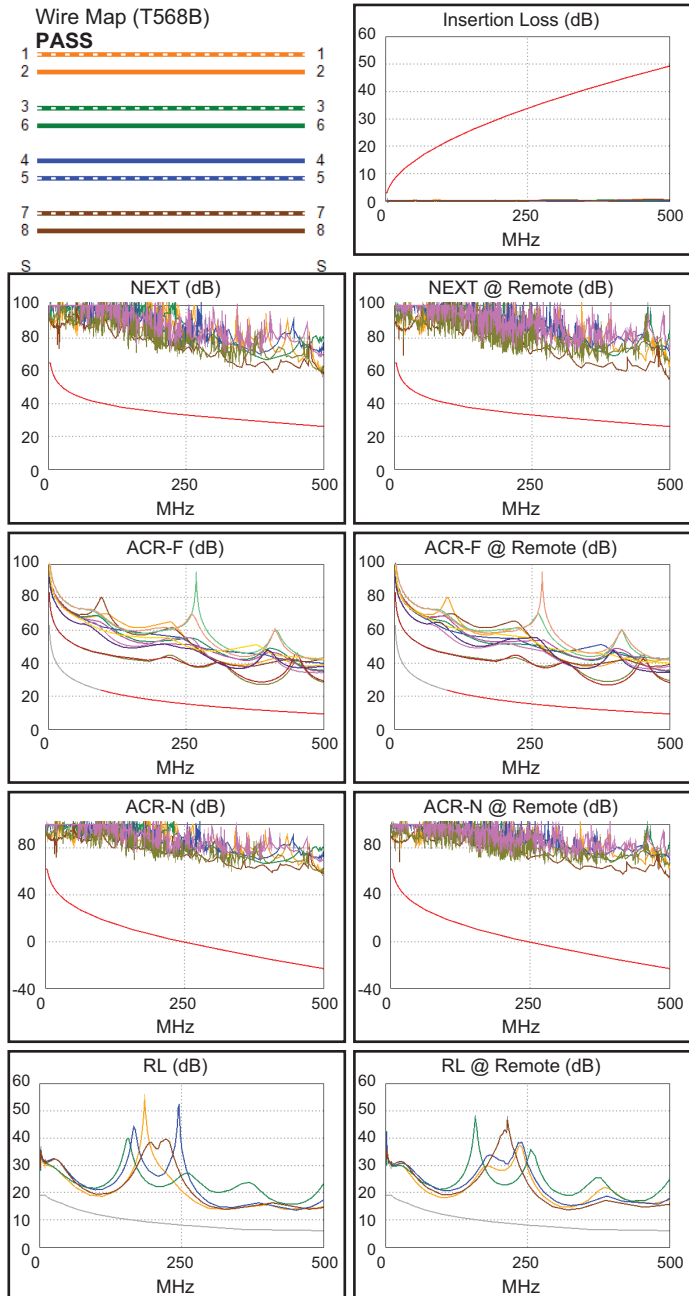
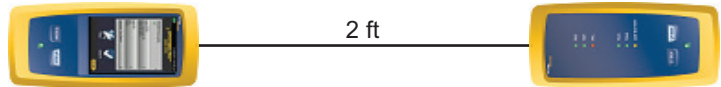
PASS	MAIN	SR	MAIN	SR
Worst Pair	3,6-4,5	4,5-3,6	3,6-4,5	4,5-3,6
ACR-F (dB)	15.5	15.2	15.8	15.4
Freq. (MHz)	384.0	384.0	394.0	391.0
Limit (dB)	11.6	11.6	11.3	11.4
Worst Pair	4,5	3,6	4,5	3,6
PS ACR-F (dB)	18.3	17.8	18.3	17.8
Freq. (MHz)	383.0	384.0	383.0	384.0
Limit (dB)	8.6	8.6	8.6	8.6

N/A	MAIN	SR	MAIN	SR
Worst Pair	1,2-3,6	3,6-4,5	3,6-4,5	3,6-4,5
ACR-N (dB)	27.6	26.5	81.3	77.9
Freq. (MHz)	1.8	1.9	498.0	500.0
Limit (dB)	62.0	62.0	-23.1	-23.2
Worst Pair	3,6	3,6	3,6	3,6
PS ACR-N (dB)	26.9	26.5	79.7	79.7
Freq. (MHz)	1.8	3.4	498.0	500.0
Limit (dB)	59.0	57.9	-25.9	-26.1

N/A	MAIN	SR	MAIN	SR
Worst Pair	1,2	1,2	1,2	7,8
RL (dB)	6.4	6.0	7.5	6.7
Freq. (MHz)	92.3	98.8	468.0	327.0
Limit (dB)	12.4	12.1	6.0	6.9

Compliant Network Standards:

10BASE-T	100BASE-TX	100BASE-T4
1000BASE-T	2.5GBASE-T	5GBASE-T
10GBASE-T	ATM-25	ATM-51
ATM-155	100VG-AnyLan	TR-4
TR-16 Active	TR-16 Passive	





Cable ID: CAT6A SLIM 077 3

Test Limit: TIA Cat 6A Channel

Limits Version: V7.5

Date / Time: 01/29/2021 02:36:50 PM

Operator: VERTICAL TECH

Headroom 22.4 dB (NEXT 3,6-4,5)

Cable Type: Cat 6A U/UTP

NVP: 68.2%

Main: Versiv

S/N: 3676207

Software Version: V6.5 Build 5

Calibration Date: 01/26/2017

Adapter: DSX-5000 (DSX-CHA004)

S/N: 3681012

Remote: Versiv

S/N: 3687009

Software Version: V6.5 Build 5

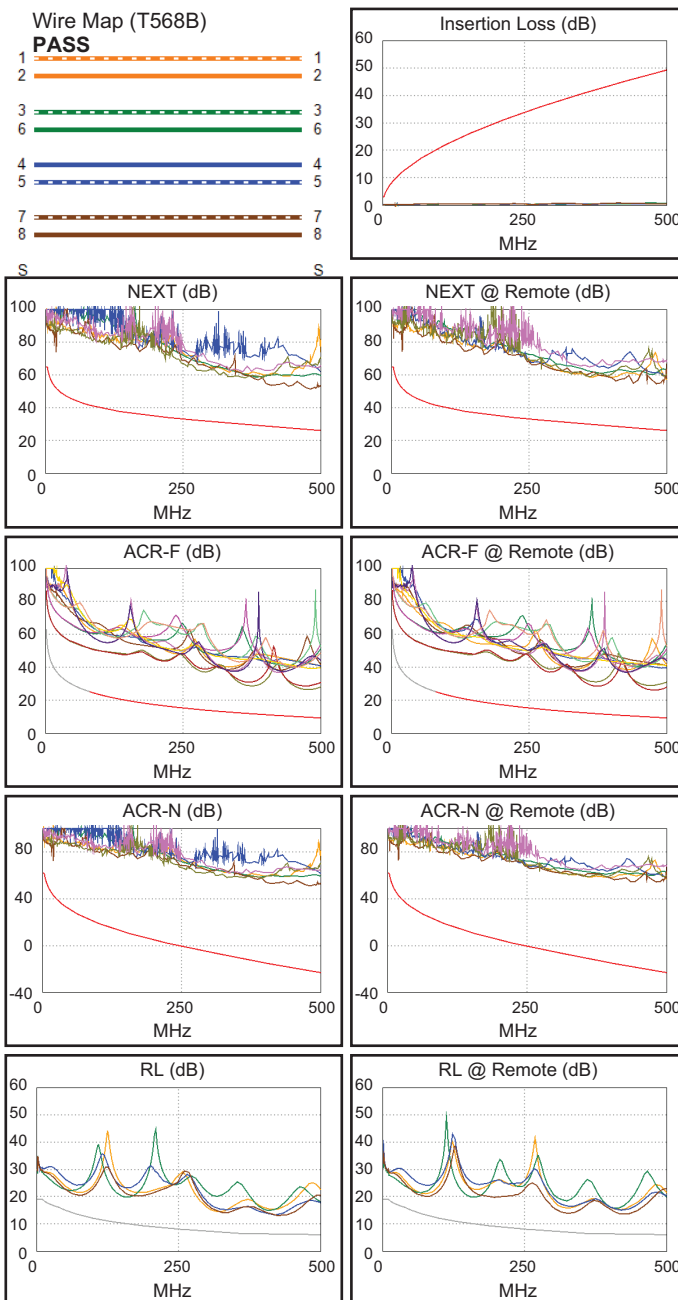
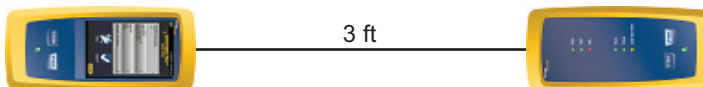
Calibration Date: 01/26/2017

Adapter: DSX-5000R (DSX-CHA004)

S/N: 3681674

Test Summary: PASS

Length (ft), Limit 328	[Pair 1,2]	3
Prop. Delay (ns), Limit 555	[Pair 1,2]	4
Delay Skew (ns), Limit 50	[Pair 1,2]	0
Resistance (ohms)	[Pair 1,2]	0.38
Insertion Loss Margin (dB)	[Pair 3,6]	47.6
Frequency (MHz)	[Pair 3,6]	482.0
Limit (dB)	[Pair 3,6]	48.3



Worst Case Margin Worst Case Value

PASS	MAIN	SR	MAIN	SR
Worst Pair	3,6-4,5	3,6-4,5	3,6-4,5	3,6-4,5
NEXT (dB)	23.1	22.4	24.2	27.2
Freq. (MHz)	3.9	3.9	480.0	483.0
Limit (dB)	63.3	63.3	26.6	26.5
Worst Pair	3,6	3,6	4,5	4,5
PS NEXT (dB)	22.4	22.3	26.4	29.3
Freq. (MHz)	3.9	3.9	480.0	483.0
Limit (dB)	60.8	60.8	23.7	23.6

PASS	MAIN	SR	MAIN	SR
Worst Pair	3,6-4,5	4,5-3,6	3,6-4,5	4,5-3,6
ACR-F (dB)	16.7	16.4	16.7	16.5
Freq. (MHz)	478.0	479.0	478.0	481.0
Limit (dB)	9.7	9.7	9.7	9.6
Worst Pair	4,5	3,6	4,5	3,6
PS ACR-F (dB)	19.5	19.3	19.5	19.4
Freq. (MHz)	478.0	479.0	478.0	481.0
Limit (dB)	6.7	6.7	6.7	6.6

N/A	MAIN	SR	MAIN	SR
Worst Pair	3,6-4,5	3,6-4,5	3,6-4,5	3,6-4,5
ACR-N (dB)	27.1	26.4	72.1	75.3
Freq. (MHz)	3.9	3.9	480.0	483.0
Limit (dB)	59.2	59.2	-21.6	-21.9
Worst Pair	3,6	3,6	3,6	3,6
PS ACR-N (dB)	26.4	26.3	74.3	77.6
Freq. (MHz)	3.9	3.9	480.0	488.0
Limit (dB)	56.7	56.7	-24.5	-25.1

N/A	MAIN	SR	MAIN	SR
Worst Pair	7,8	7,8	7,8	7,8
RL (dB)	7.0	6.6	7.0	7.5
Freq. (MHz)	433.0	71.5	433.0	427.0
Limit (dB)	6.0	13.5	6.0	6.0

Compliant Network Standards:

10BASE-T	100BASE-TX	100BASE-T4
1000BASE-T	2.5GBASE-T	5GBASE-T
10GBASE-T	ATM-25	ATM-51
ATM-155	100VG-AnyLan	TR-4
TR-16 Active	TR-16 Passive	



Cable ID: CAT6A SLIM 077 5

Test Limit: TIA Cat 6A Channel

Limits Version: V7.5

Date / Time: 01/29/2021 02:37:59 PM

Operator: VERTICAL TECH

Headroom 9.8 dB (NEXT 1,2-3,6)

Cable Type: Cat 6A U/UTP

NVP: 68.2%

Main: Versiv

S/N: 3676207

Software Version: V6.5 Build 5

Calibration Date: 01/26/2017

Adapter: DSX-5000 (DSX-CHA004)

S/N: 3681012

Test Summary: PASS

Remote: Versiv

S/N: 3687009

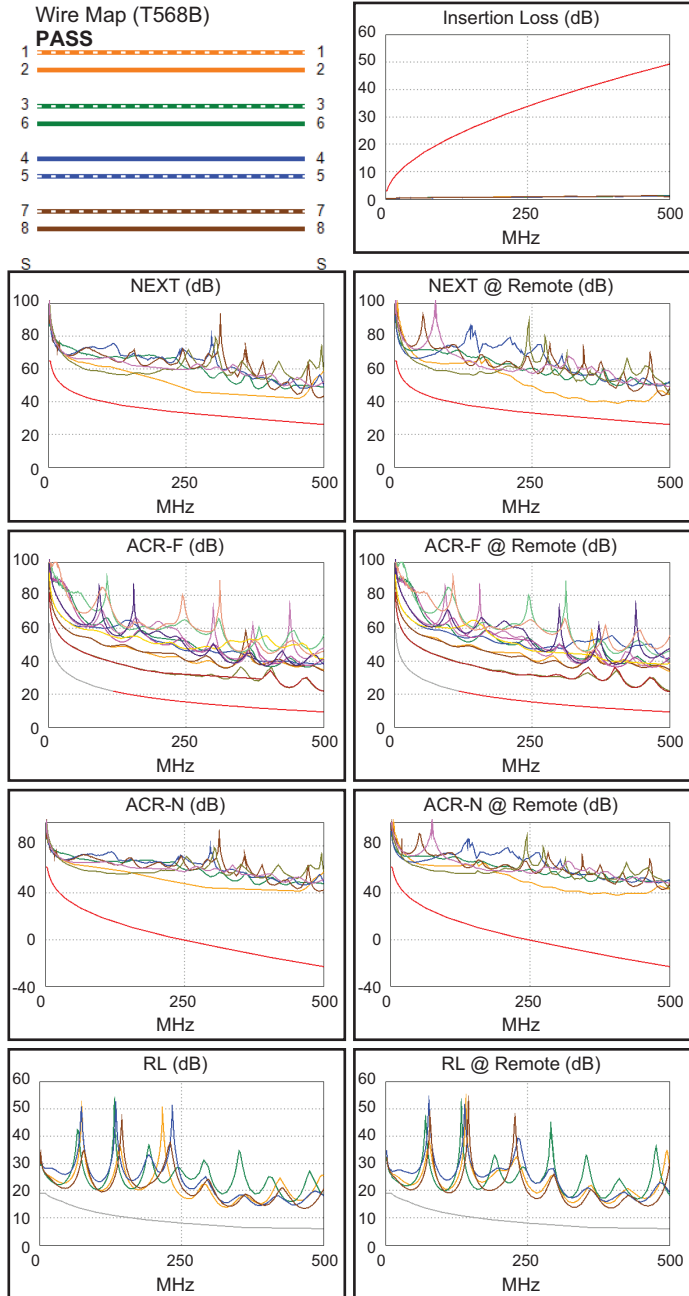
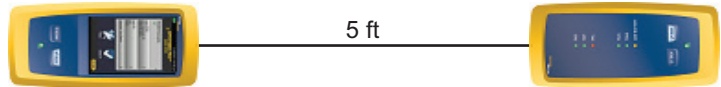
Software Version: V6.5 Build 5

Calibration Date: 01/26/2017

Adapter: DSX-5000R (DSX-CHA004)

S/N: 3681674

Length (ft), Limit 328	[Pair 1,2]	5
Prop. Delay (ns), Limit 555	[Pair 3,6]	7
Delay Skew (ns), Limit 50	[Pair 1,2]	0
Resistance (ohms)	[Pair 7,8]	0.66
Insertion Loss Margin (dB)	[Pair 3,6]	47.8
Frequency (MHz)	[Pair 3,6]	497.0
Limit (dB)	[Pair 3,6]	49.1



Worst Case Margin Worst Case Value

PASS	MAIN	SR	MAIN	SR
Worst Pair	1,2-3,6	1,2-3,6	1,2-3,6	1,2-3,6
NEXT (dB)	9.9	9.8	10.9	10.5
Freq. (MHz)	357.0	360.0	407.0	407.0
Limit (dB)	30.1	30.0	28.5	28.5
Worst Pair	1,2	1,2	3,6	3,6
PS NEXT (dB)	12.6	12.3	13.0	12.7
Freq. (MHz)	354.0	360.0	407.0	404.0
Limit (dB)	27.2	27.0	25.6	25.7

PASS	MAIN	SR	MAIN	SR
Worst Pair	3,6-4,5	4,5-3,6	3,6-4,5	4,5-3,6
ACR-F (dB)	12.6	12.4	12.6	12.4
Freq. (MHz)	500.0	500.0	500.0	500.0
Limit (dB)	9.3	9.3	9.3	9.3
Worst Pair	3,6	3,6	3,6	3,6
PS ACR-F (dB)	15.3	15.1	15.3	15.1
Freq. (MHz)	500.0	500.0	500.0	500.0
Limit (dB)	6.3	6.3	6.3	6.3

N/A	MAIN	SR	MAIN	SR
Worst Pair	1,2-7,8	1,2-4,5	1,2-3,6	1,2-3,6
ACR-N (dB)	23.8	22.9	53.9	53.5
Freq. (MHz)	3.9	3.9	407.0	407.0
Limit (dB)	59.2	59.2	-15.5	-15.5
Worst Pair	1,2	1,2	3,6	3,6
PS ACR-N (dB)	23.6	22.6	56.1	55.9
Freq. (MHz)	3.9	3.9	407.0	406.0
Limit (dB)	56.7	56.7	-18.5	-18.4

N/A	MAIN	SR	MAIN	SR
Worst Pair	7,8	7,8	7,8	7,8
RL (dB)	4.9	4.4	7.4	7.4
Freq. (MHz)	41.0	40.3	469.0	399.0
Limit (dB)	15.9	16.0	6.0	6.0

Compliant Network Standards:
 10BASE-T 100BASE-TX 100BASE-T4
 1000BASE-T 2.5GBASE-T
 10GBASE-T ATM-25 ATM-51
 ATM-155 100VG-AnyLan TR-4
 TR-16 Active TR-16 Passive



Cable ID: CAT6A SLIM 077 7

Test Limit: TIA Cat 6A Channel

Limits Version: V7.5

Date / Time: 01/29/2021 02:39:13 PM

Operator: VERTICAL TECH

Headroom 15.7 dB (NEXT 3,6-4,5)

Cable Type: Cat 6A U/UTP

NVP: 68.2%

Main: Versiv

S/N: 3676207

Software Version: V6.5 Build 5

Calibration Date: 01/26/2017

Adapter: DSX-5000 (DSX-CHA004)

S/N: 3681012

Remote: Versiv

S/N: 3687009

Software Version: V6.5 Build 5

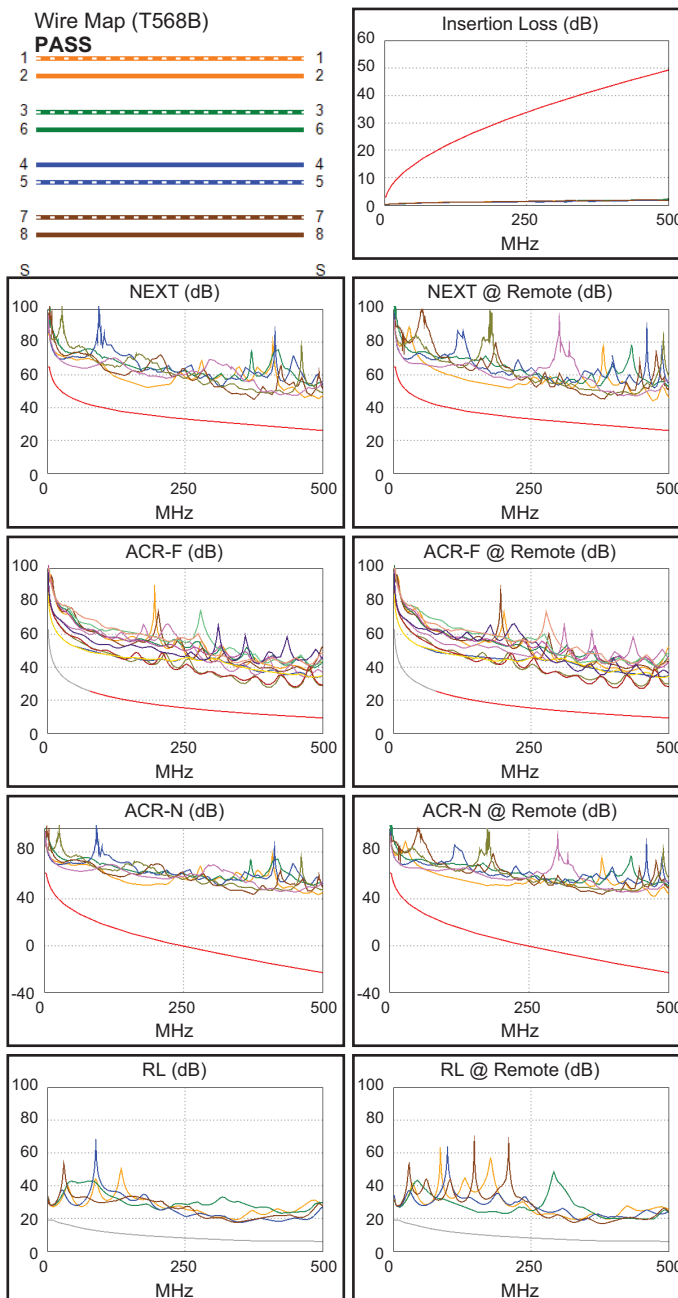
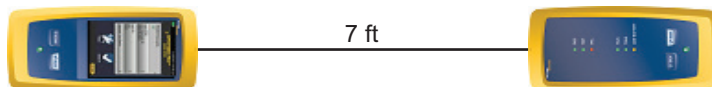
Calibration Date: 01/26/2017

Adapter: DSX-5000R (DSX-CHA004)

S/N: 3681674

Test Summary: PASS

Length (ft), Limit 328	[Pair 1,2]	7
Prop. Delay (ns), Limit 555	[Pair 1,2]	10
Delay Skew (ns), Limit 50	[Pair 1,2]	0
Resistance (ohms)	[Pair 1,2]	0.99
Insertion Loss Margin (dB)	[Pair 3,6]	47.1
Frequency (MHz)	[Pair 3,6]	500.0
Limit (dB)	[Pair 3,6]	49.3



Worst Case Margin Worst Case Value

PASS	MAIN	SR	MAIN	SR
Worst Pair	3,6-4,5	3,6-4,5	3,6-4,5	1,2-3,6
NEXT (dB)	15.7	15.8	15.7	17.1
Freq. (MHz)	375.0	380.0	375.0	474.0
Limit (dB)	29.5	29.3	29.5	26.7
Worst Pair	3,6	7,8	3,6	1,2
PS NEXT (dB)	17.3	16.6	20.3	19.0
Freq. (MHz)	374.0	10.6	486.0	474.0
Limit (dB)	26.6	53.6	23.6	23.8

PASS	MAIN	SR	MAIN	SR
Worst Pair	3,6-4,5	4,5-3,6	3,6-4,5	4,5-3,6
ACR-F (dB)	16.4	16.1	17.3	16.8
Freq. (MHz)	402.0	402.0	451.0	451.0
Limit (dB)	11.2	11.2	10.2	10.2
Worst Pair	4,5	3,6	4,5	3,6
PS ACR-F (dB)	19.2	18.8	20.1	19.3
Freq. (MHz)	402.0	402.0	451.0	453.0
Limit (dB)	8.2	8.2	7.2	7.1

N/A	MAIN	SR	MAIN	SR
Worst Pair	1,2-3,6	1,2-3,6	1,2-3,6	1,2-3,6
ACR-N (dB)	21.5	22.4	66.2	63.3
Freq. (MHz)	3.4	3.1	492.0	474.0
Limit (dB)	60.4	61.1	-22.6	-21.2
Worst Pair	1,2	7,8	3,6	1,2
PS ACR-N (dB)	21.7	21.4	68.0	64.9
Freq. (MHz)	3.4	3.8	498.0	474.0
Limit (dB)	57.9	57.0	-25.9	-24.0

N/A	MAIN	SR	MAIN	SR
Worst Pair	1,2	1,2	4,5	7,8
RL (dB)	8.1	7.7	11.0	10.5
Freq. (MHz)	10.0	10.0	352.0	381.0
Limit (dB)	19.0	19.0	6.5	6.2

Compliant Network Standards:

10BASE-T	100BASE-TX	100BASE-T4
1000BASE-T	2.5GBASE-T	5GBASE-T
10GBASE-T	ATM-25	ATM-51
ATM-155	100VG-AnyLan	TR-4
TR-16 Active	TR-16 Passive	



Cable ID: CAT6A SLIM 077 10

Test Limit: TIA Cat 6A Channel

Limits Version: V7.5

Date / Time: 01/29/2021 02:40:15 PM

Operator: VERTICAL TECH

Headroom 10.2 dB (NEXT 1,2-3,6)

Cable Type: Cat 6A U/UTP

NVP: 68.2%

Main: Versiv

S/N: 3676207

Software Version: V6.5 Build 5

Calibration Date: 01/26/2017

Adapter: DSX-5000 (DSX-CHA004)

S/N: 3681012

Test Summary: PASS

Remote: Versiv

S/N: 3687009

Software Version: V6.5 Build 5

Calibration Date: 01/26/2017

Adapter: DSX-5000R (DSX-CHA004)

S/N: 3681674

Length (ft), Limit 328	[Pair 1,2]	10
Prop. Delay (ns), Limit 555	[Pair 3,6]	15
Delay Skew (ns), Limit 50	[Pair 1,2]	0
Resistance (ohms)	[Pair 4,5]	1.26
Insertion Loss Margin (dB)	[Pair 7,8]	46.7
Frequency (MHz)	[Pair 7,8]	500.0
Limit (dB)	[Pair 7,8]	49.3

Worst Case Margin Worst Case Value

PASS	MAIN	SR	MAIN	SR
Worst Pair	1,2-3,6	1,2-3,6	1,2-7,8	1,2-7,8
NEXT (dB)	10.2	10.6	11.2	12.5
Freq. (MHz)	117.0	120.0	431.0	435.0
Limit (dB)	38.8	38.6	27.9	27.7
Worst Pair	1,2	1,2	7,8	7,8
PS NEXT (dB)	12.1	12.5	13.1	13.8
Freq. (MHz)	14.1	134.5	432.0	434.0
Limit (dB)	51.5	34.9	24.9	24.9

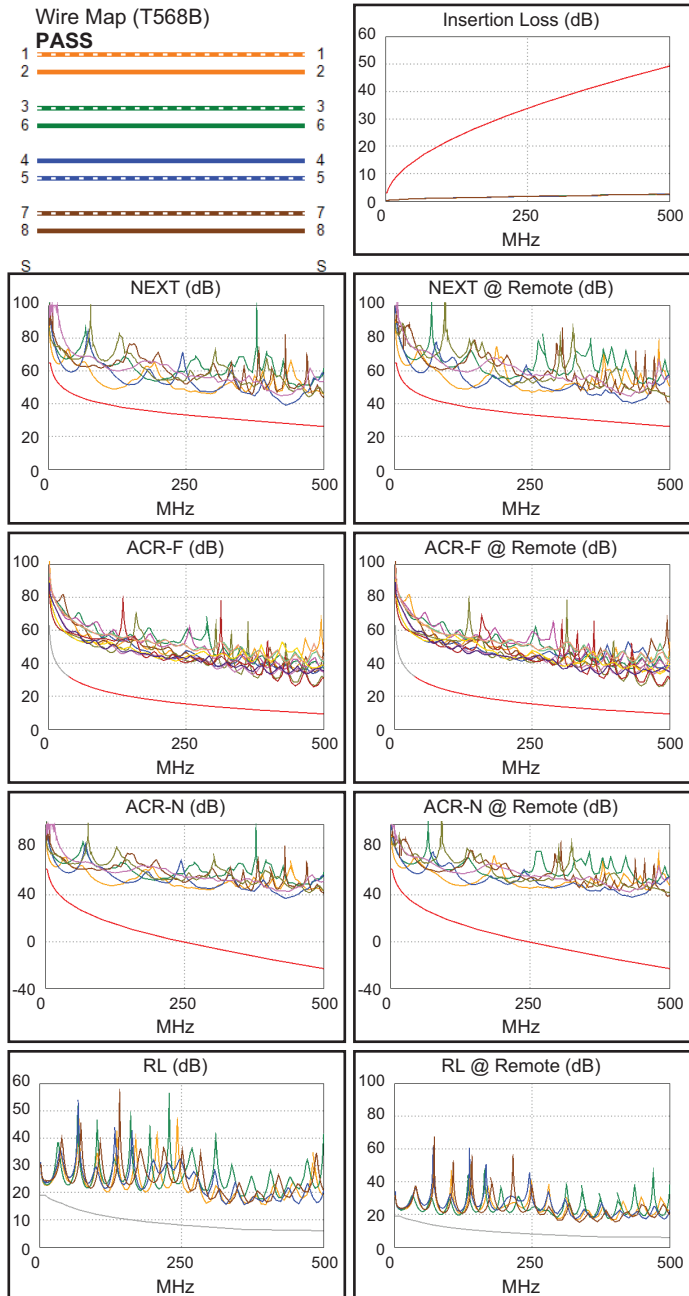
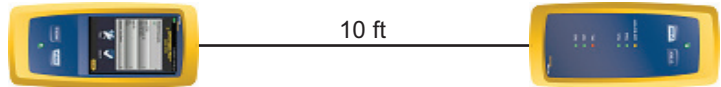
PASS	MAIN	SR	MAIN	SR
Worst Pair	4,5-3,6	3,6-4,5	4,5-3,6	3,6-4,5
ACR-F (dB)	16.0	16.1	16.0	16.2
Freq. (MHz)	483.0	484.0	483.0	485.0
Limit (dB)	9.6	9.6	9.6	9.5
Worst Pair	3,6	3,6	3,6	3,6
PS ACR-F (dB)	18.3	18.7	18.6	18.7
Freq. (MHz)	448.0	484.0	483.0	484.0
Limit (dB)	7.2	6.6	6.6	6.6

N/A	MAIN	SR	MAIN	SR
Worst Pair	1,2-3,6	1,2-3,6	1,2-7,8	1,2-7,8
ACR-N (dB)	15.6	16.8	54.6	55.9
Freq. (MHz)	4.0	7.8	432.0	435.0
Limit (dB)	58.9	52.7	-17.7	-18.0
Worst Pair	3,6	3,6	7,8	7,8
PS ACR-N (dB)	16.9	18.3	56.3	57.2
Freq. (MHz)	4.6	3.9	432.0	434.0
Limit (dB)	55.1	56.7	-20.6	-20.8

N/A	MAIN	SR	MAIN	SR
Worst Pair	1,2	3,6	1,2	7,8
RL (dB)	3.7	3.7	9.3	9.1
Freq. (MHz)	9.9	10.6	396.0	402.0
Limit (dB)	19.0	18.9	6.0	6.0

Compliant Network Standards:

10BASE-T	100BASE-TX	100BASE-T4
1000BASE-T	2.5GBASE-T	5GBASE-T
10GBASE-T	ATM-25	ATM-51
ATM-155	100VG-AnyLan	TR-4
TR-16 Active	TR-16 Passive	





Cable ID: CAT6A SLIM 077 14

Test Limit: TIA Cat 6A Channel

Limits Version: V7.5

Date / Time: 01/29/2021 02:41:49 PM

Operator: VERTICAL TECH

Headroom 6.1 dB (NEXT 1,2-4,5)

Cable Type: Cat 6A U/UTP

NVP: 68.2%

Main: Versiv

S/N: 3676207

Software Version: V6.5 Build 5

Calibration Date: 01/26/2017

Adapter: DSX-5000 (DSX-CHA004)

S/N: 3681012

Test Summary: PASS

Remote: Versiv

S/N: 3687009

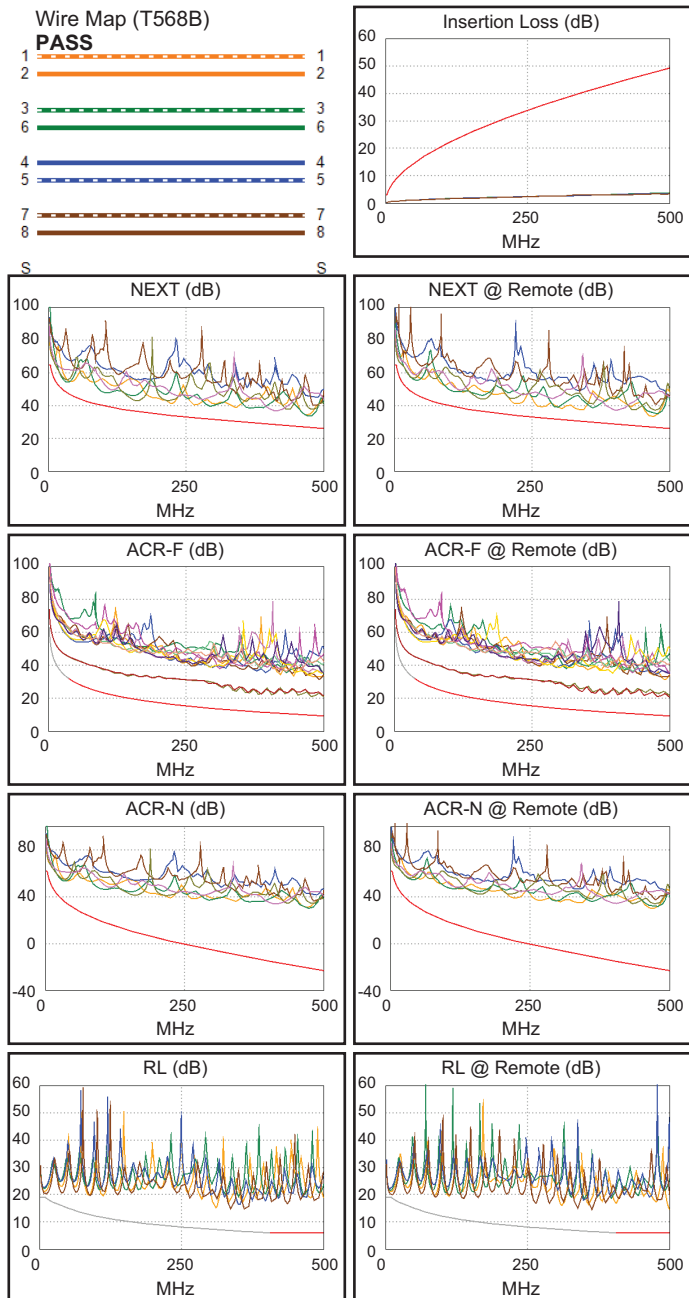
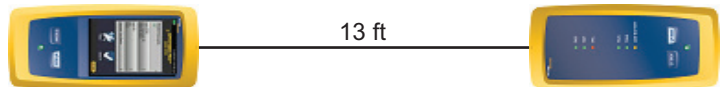
Software Version: V6.5 Build 5

Calibration Date: 01/26/2017

Adapter: DSX-5000R (DSX-CHA004)

S/N: 3681674

Length (ft), Limit 328	[Pair 7,8]	13
Prop. Delay (ns), Limit 555	[Pair 4,5]	21
Delay Skew (ns), Limit 50	[Pair 1,2]	1
Resistance (ohms)	[Pair 4,5]	1.73
Insertion Loss Margin (dB)	[Pair 1,2]	45.6
Frequency (MHz)	[Pair 1,2]	500.0
Limit (dB)	[Pair 1,2]	49.3



Worst Case Margin Worst Case Value

PASS	MAIN	SR	MAIN	SR
Worst Pair	1,2-4,5	1,2-3,6	1,2-4,5	1,2-3,6
NEXT (dB)	6.1	6.5	6.8	6.6
Freq. (MHz)	30.6	469.0	474.0	471.0
Limit (dB)	48.6	26.9	26.7	26.8
Worst Pair	1,2	1,2	1,2	1,2
PS NEXT (dB)	6.8	7.2	7.1	7.4
Freq. (MHz)	34.0	303.0	474.0	472.0
Limit (dB)	45.1	28.7	23.8	23.9

PASS	MAIN	SR	MAIN	SR
Worst Pair	3,6-4,5	4,5-3,6	3,6-4,5	4,5-3,6
ACR-F (dB)	10.3	10.2	11.2	11.1
Freq. (MHz)	384.0	384.0	481.0	480.0
Limit (dB)	11.6	11.6	9.6	9.6
Worst Pair	4,5	3,6	4,5	3,6
PS ACR-F (dB)	13.2	13.2	14.4	14.2
Freq. (MHz)	384.0	384.0	500.0	500.0
Limit (dB)	8.6	8.6	6.3	6.3

N/A	MAIN	SR	MAIN	SR
Worst Pair	1,2-3,6	3,6-7,8	1,2-4,5	1,2-3,6
ACR-N (dB)	12.2	11.1	51.3	50.9
Freq. (MHz)	3.3	3.1	474.0	471.0
Limit (dB)	60.7	61.1	-21.2	-20.9
Worst Pair	3,6	3,6	1,2	1,2
PS ACR-N (dB)	12.2	11.7	51.4	51.7
Freq. (MHz)	3.3	3.5	474.0	472.0
Limit (dB)	58.2	57.6	-24.0	-23.9

PASS	MAIN	SR	MAIN	SR
Worst Pair	7,8	7,8	7,8	1,2
RL (dB)	7.9	8.3	7.9	8.4
Freq. (MHz)	361.0	337.0	361.0	500.0
Limit (dB)	6.4	6.7	6.4	6.0

Compliant Network Standards:
 10BASE-T 100BASE-TX 100BASE-T4
 1000BASE-T 2.5GBASE-T 5GBASE-T
 10GBASE-T ATM-25 ATM-51
 ATM-155 100VG-AnyLan TR-4
 TR-16 Active TR-16 Passive



Cable ID: CAT6A SLIM 077 25

Test Limit: TIA Cat 6A Channel

Limits Version: V7.5

Date / Time: 01/29/2021 04:04:53 PM

Operator: VERTICAL TECH

Headroom 11.2 dB (NEXT 3,6-4,5)

Cable Type: Cat 6A U/UTP

NVP: 68.2%

Main: Versiv

S/N: 3676207

Software Version: V6.5 Build 5

Calibration Date: 01/26/2017

Adapter: DSX-5000 (DSX-CHA004)

S/N: 3681012

Test Summary: PASS

Remote: Versiv

S/N: 3687009

Software Version: V6.5 Build 5

Calibration Date: 01/26/2017

Adapter: DSX-5000R (DSX-CHA004)

S/N: 3681674

Length (ft), Limit 328	[Pair 7,8]	25
Prop. Delay (ns), Limit 555	[Pair 4,5]	38
Delay Skew (ns), Limit 50	[Pair 1,2]	1
Resistance (ohms)	[Pair 4,5]	3.03
Insertion Loss Margin (dB)	[Pair 3,6]	42.0
Frequency (MHz)	[Pair 3,6]	495.0
Limit (dB)	[Pair 3,6]	49.0

Worst Case Margin Worst Case Value

PASS	MAIN	SR	MAIN	SR
Worst Pair	3,6-4,5	1,2-7,8	1,2-4,5	1,2-4,5
NEXT (dB)	11.2	11.6	13.2	14.0
Freq. (MHz)	69.8	143.5	404.0	445.0
Limit (dB)	42.6	37.3	28.6	27.5
Worst Pair	3,6	7,8	1,2	1,2
PS NEXT (dB)	12.8	12.1	13.7	14.9
Freq. (MHz)	69.8	143.5	404.0	445.0
Limit (dB)	39.8	34.4	25.7	24.6

PASS	MAIN	SR	MAIN	SR
Worst Pair	4,5-3,6	3,6-4,5	3,6-4,5	4,5-3,6
ACR-F (dB)	16.8	17.0	17.1	17.0
Freq. (MHz)	444.0	444.0	500.0	500.0
Limit (dB)	10.3	10.3	9.3	9.3
Worst Pair	3,6	3,6	4,5	3,6
PS ACR-F (dB)	19.8	18.9	19.8	18.9
Freq. (MHz)	444.0	500.0	500.0	500.0
Limit (dB)	7.3	6.3	6.3	6.3

N/A	MAIN	SR	MAIN	SR
Worst Pair	3,6-4,5	3,6-4,5	1,2-4,5	1,2-4,5
ACR-N (dB)	16.2	16.6	51.2	54.0
Freq. (MHz)	3.9	2.6	405.0	445.0
Limit (dB)	59.2	61.6	-15.4	-18.8
Worst Pair	3,6	3,6	1,2	1,2
PS ACR-N (dB)	16.8	16.4	51.8	55.0
Freq. (MHz)	3.5	2.6	404.0	445.0
Limit (dB)	57.6	58.6	-18.2	-21.7

PASS	MAIN	SR	MAIN	SR
Worst Pair	7,8	7,8	7,8	7,8
RL (dB)	12.7	11.5	12.7	11.5
Freq. (MHz)	500.0	270.0	500.0	270.0
Limit (dB)	6.0	7.7	6.0	7.7

Compliant Network Standards:

10BASE-T	100BASE-TX	100BASE-T4
1000BASE-T	2.5GBASE-T	5GBASE-T
10GBASE-T	ATM-25	ATM-51
ATM-155	100VG-AnyLan	TR-4
TR-16 Active	TR-16 Passive	

