

# INSTRUCTIONS



## OSP Transition Boxes | 268-OPB01 Series

### SURFACE MOUNTING

Using screws provided with 268-OPB box affix it to intended surface with help of two ears at its top and bottom ①



### UNLOCKING BOX

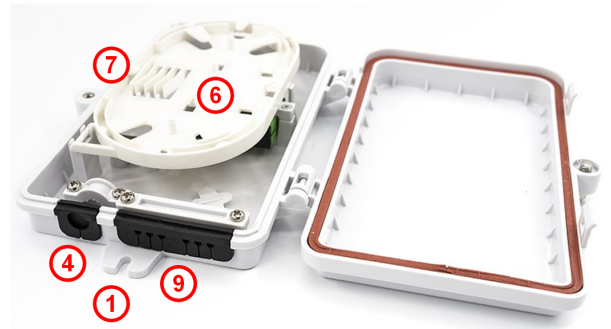
Using plastic key provided with 268-OPB box unscrew safety locking bolt ② completely.

Disengage two latches ③ located on box's side and open lid.

### LOCKING BOX

Close lid making sure two latches ③ on its cover are fully engaged with corresponding teeth located on box's side.

Using plastic key provided with 268-OPB box screw safety locking bolt ② tightly.



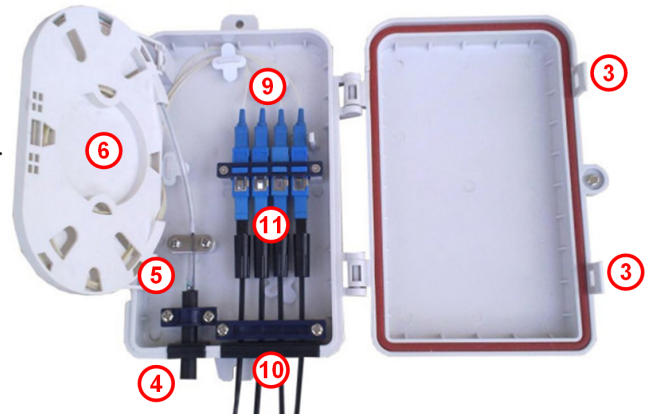
### ENTERING DISTRIBUTION CABLE

Prepare cable for termination or splicing.

Pass cable through inlet compression fitting ④ and fix by cable clamp ⑤.

Cable strength member, if present, can be fixed using anchor ⑥.

Route fibers to splice/fiber-management tray ⑦.



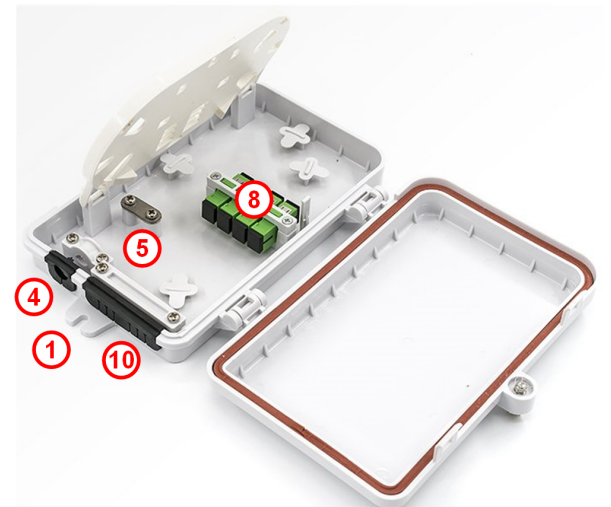
### TERMINATION/SPLICING

Depending on project requirements, connectorize fibers or splice them.

In case of splicing, place splices in splice protection sleeves provided with 268-OPB box, then secure in splice holder ⑧.

Arrange fiber slack in fiber management mechanism integrated in tray.

Connect plugs using adapters ⑨ pre-installed with 268-OPB box.



### ENTERING DROP CABLES

Release clamp and pass drop cables through outlet compression fittings ⑪.

### CONNECTING CIRCUITS

Connect drop cables' plugs ⑫ using adapters ⑨.