

# CAT6 HIGH GRADE 550MHz UTP PLENUM (SPLINE-LESS) TAA COMPLIANT



## SKU: 066 SERIES

### Technical Data

NVP	69%
<b>Construction</b>	
<b>Conductor</b>	Solid Bare Copper
AWG	23
<b>Insulation</b>	FEP
Thickness	0.009 in. (0.22 mm)
<b>Jacket</b>	FR-PVC
Outer Diameter	0.21 in. (5.3 mm)
Separator (Divider)	No (Spline-less)
Rip Cord	Yes

### Color of Pairs

Pair 1	Blue, White-Blue
Pair 2	Orange, White-Orange
Pair 3	Green, White-Green
Pair 4	Brown, White-Brown

### Electrical Characteristics

Standard	ANSI/TIA-568.2-D
Impedance	100Ω±15%

### Standards

Flame Test 6 (FT6 Rating), ANSI/NFPA Standard 262 with the applicable electrical transmission characteristics

### Applications

High Speed Horizontal Cabling  
100 Mbps TPDDI, 1000 Base T. 622 Mbps ATM  
IEEE802.3/IEEE802.5, Gigabit Ethernet

### Jacket Printing

Vertical Cable E191267 (UL) c(UL) CMP FT6 75 °C 23 AWG 4PR - ETL VERIFIED CAT6 ANSI/TIA 568.2-D TESTED TO 550MHz ROHS COMPLIANT P13199 1000FT 01/2023

Jacket color available in  
Black, Blue, Green, Gray, Red, White, Yellow, Orange, Purple, Pink

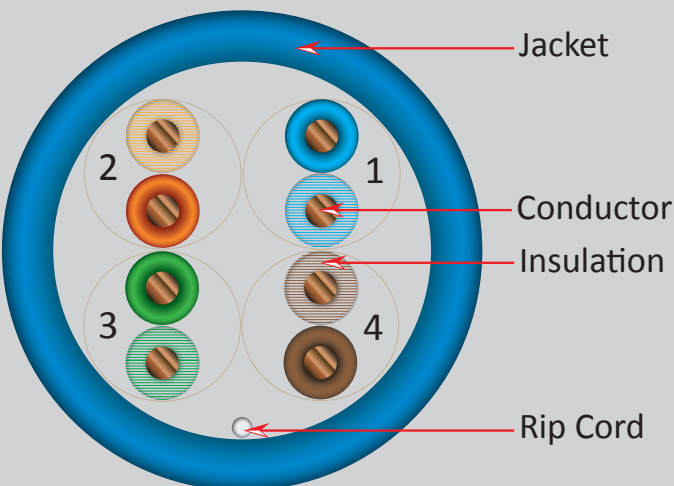


## DESCRIPTION

CAT6, 23 AWG, UTP, Solid Bare Copper, Plenum CMP Rated.

## FEATURES

- Unshielded Twisted-Pair (UTP) Construction
- Plenum Fire Safety Rating (CMP)
- 23 AWG Bare Copper Conductors
- Easy-to-See Vivid-Color Conductor Insulation & Jacket
- Meets or exceeds ANSI/TIA-568.2-D and ISO/IEC 11801 Transmission Performance Specifications
- UL-Listed, RoHS Compliant
- Designed in the USA, Imported Product - TAA Compliant
- Packaging: 1,000 ft Pull Box
- Weight: 28.5 lbs



## VERTICAL CABLE

951.696.7772 California  
800.749.2447 Florida  
845.391.8318 New York

[www.verticalcable.com](http://www.verticalcable.com)

Rev. 05/2023

Specs subject to change without notice.  
It is the sole responsibility of the user to have the most current specs.

# CAT6 HIGH GRADE 550MHz UTP PLENUM (SPLINE-LESS) TAA COMPLIANT

## PERFORMANCE

### Electrical Characteristics:

Conductor Resistance	93.8 Ω/km 20° C Max
Mutual Capacitance	5.6 nF/100m Max
Resistance Unbalance	5% Max
Capacitance Unbalance	330 pF/100m Max

Frequency (MHz)	Attenuation Min. dB/100m	Return Loss Min. dB/100m	NEXT Min. dB/100m
1	2.0	21.0	74.3
4	3.8	23.4	65.3
8	5.4	24.6	60.8
10	6.0	25.0	59.3
16	7.7	25.0	56.3
20	8.6	25.0	54.8
25	9.6	24.3	53.3
31.25	10.8	23.6	51.9
62.5	15.7	21.5	47.4
100	20.2	20.1	44.3
200	29.8	18.0	39.8
250	33.8	17.3	38.3
300	34.9	16.8	37.1
350	36.3	16.3	36.1
400	39.6	15.9	35.3
500	45.4	15.2	33.8
550	48.3	14.9	33.2

Frequency (MHz)	P.S NEXT Min. dB/100m	FEXT Min. dB/100m	P.S ELNEXT Min. dB/100m
1	72.3	67.8	64.8
4	63.3	55.7	52.7
8	58.8	49.7	46.7
10	57.3	47.8	44.8
16	54.3	43.7	40.7
20	52.8	41.7	38.7
25	51.3	39.8	36.8
31.25	49.9	37.9	34.9
62.5	45.4	31.8	28.8
100	42.3	27.8	24.8
200	37.0	21.7	18.7
250	36.3	19.8	16.8
300	35.1	18.3	15.3
350	34.1	16.9	13.9
400	33.3	15.8	12.8
500	31.8	13.8	10.8
550	31.2	13.0	10.0

**VERTICAL CABLE**

951.696.7772 California  
800.749.2447 Florida  
845.391.8318 New York



[www.verticalcable.com](http://www.verticalcable.com)

Rev. 05/2023

Specs subject to change without notice.  
It is the sole responsibility of the user to have the most current specs.

# CAT6 HIGH GRADE 550MHz UTP PLENUM (SPLINE-LESS) TAA COMPLIANT



**Cable ID: 066-10G TEST**

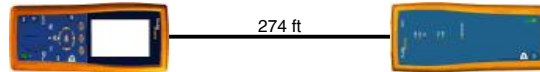
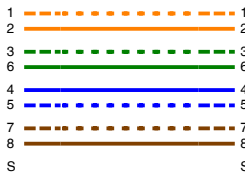
**Test Summary: PASS**

Date / Time: 06/14/2013 12:30:31pm  
 Headroom: 3.5 dB (NEXT 12-45)  
 Test Limit: 10GBASE-T  
 Cable Type: Cat 6 UTP

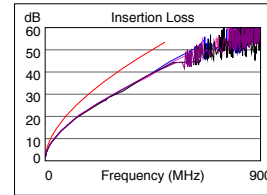
Operator: Your Name  
 Software Version: 2.5200  
 Limits Version: 1.7000  
 NVP: 69.0%

Model: DTX-1800  
 Main S/N: 1279007  
 Remote S/N: 1279008  
 Main Adapter: DTX-CHA002  
 Remote Adapter: DTX-CHA002

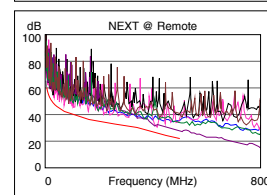
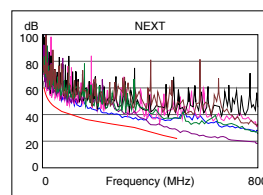
Wire Map (T568B)  
**PASS**



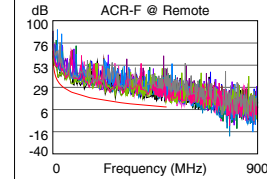
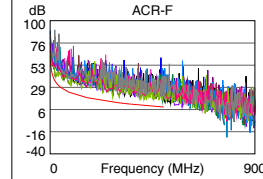
Length (ft)	[Pair 45]	274
Prop. Delay (ns), Limit 55		437
Delay Skew (ns), Limit 50		34
Resistance (ohms)	[Pair 36]	18.0
Insertion Loss Margin (dB)	[Pair 36]	10.6
Frequency (MHz)	[Pair 36]	500.0
Limit (dB)	[Pair 36]	53.4



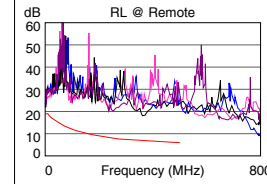
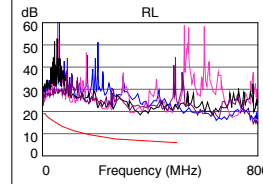
	Worst Case Margin		Worst Case Value	
	MAIN	SR	MAIN	SR
<b>PASS</b>				
Worst Pair	12-45	12-45	36-45	36-45
<b>NEXT (dB)</b>	4.6	3.5	6.0	5.5
Freq. (MHz)	29.5	46.5	484.0	493.0
Limit (dB)	48.8	45.5	22.7	22.3
Worst Pair	12	45	36	36
<b>PS NEXT (dB)</b>	5.0	3.9	6.5	5.5
Freq. (MHz)	29.4	402.0	484.0	491.0
Limit (dB)	46.2	24.4	21.0	20.8



	Worst Case Margin		Worst Case Value	
	MAIN	SR	MAIN	SR
<b>PASS</b>				
Worst Pair	12-78	12-78	78-12	12-78
<b>ACR-F (dB)</b>	4.5	4.1	5.5	4.1
Freq. (MHz)	22.9	495.0	495.0	495.0
Limit (dB)	36.1	9.4	9.4	9.4
Worst Pair	12	78	12	36
<b>PS ACR-F (dB)</b>	6.6	6.9	6.6	7.6
Freq. (MHz)	498.0	304.0	498.0	494.0
Limit (dB)	6.3	10.6	6.3	6.4



	Worst Case Margin		Worst Case Value	
	MAIN	SR	MAIN	SR
<b>PASS</b>				
Worst Pair	36	36	45	45
<b>RL (dB)</b>	3.8	5.1	11.4	11.3
Freq. (MHz)	3.9	3.9	390.0	361.0
Limit (dB)	19.0	19.0	6.1	6.4



Compliant Network Standards:  
 10BASE-T      100BASE-TX      100BASE-T4  
 1000BASE-T    10GBASE-T      ATM-25  
 ATM-51        ATM-155        100VG-AnyLan  
 TR-4            TR-16 Active    TR-16 Passive

LinkWare Version: 6.1

Project: DEFAULT  
 Site: Client Name

UNTITLED.flw



## VERTICAL CABLE

951.696.7772 California  
 800.749.2447 Florida  
 845.391.8318 New York



[www.verticalcable.com](http://www.verticalcable.com)

Rev. 05/2023

Specs subject to change without notice.

It is the sole responsibility of the user to have the most current specs.