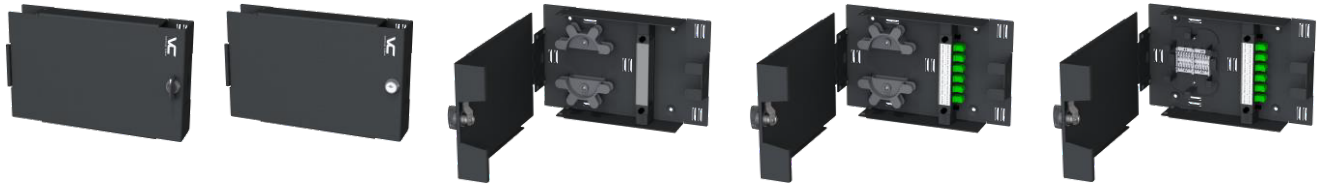


Surface- and Wall-Mount Enclosures

Adapter Plate Enclosures - EZX & EZV Series



EZ-Xcess Series



Model with Cam Latch

268-EZX01-1A[1][xx] Optical Fiber Wall-Mount Enclosures, LGX, Blank Door, [Cam Latch](#)

Blank Base

Enclosures with L-type Cable Entry Adapter Brackets

<p>268-EZX01-1A100</p> <p>Base</p> <p>Includes:</p> <ul style="list-style-type: none"> - base - cover - cam latch - FM spools - label holder 	<p>268-EZX01-1A1L1</p> <p>Base</p> <p>"L" Blank "L" Large Grommet</p>	<p>268-EZX01-1A1L2</p> <p>Base</p> <p>"L" Blank "L" Medium Grommet</p>	<p>268-EZX01-1A1L3</p> <p>Base</p> <p>"L" Blank "L" Small Grommet</p>	<p>268-EZX01-1A1L4</p> <p>Base</p> <p>"L" Blank "L" Small Gland</p>	<p>268-EZX01-1A1L5</p> <p>Base</p> <p>"L" Blank "L" Medium Gland</p>	<p>268-EZX01-1A1L6</p> <p>Base</p> <p>"L" Blank "L" Large Gland</p>
---	---	--	---	---	--	---

Enclosures with M-type Cable Entry Adapter Brackets

<p>268-EZX01-1A1M1</p> <p>Base</p> <p>"L" Blank "M" Medium Grommet</p>	<p>268-EZX01-1A1M2</p> <p>Base</p> <p>"L" Blank "M" Small Grommet</p>	<p>268-EZX01-1A1M3</p> <p>Base</p> <p>"L" Blank "M" Small Gland</p>	<p>268-EZX01-1A1M4</p> <p>Base</p> <p>"L" Blank "M" Medium Gland</p>	<p>268-EZX01-1A1M5</p> <p>Base</p> <p>"L" Blank "M" Large Gland</p>	<p>268-EZX01-1A1M6</p> <p>Base</p> <p>"L" Blank "M" MPOx1 Lateral</p>	<p>268-EZX01-1A1M7</p> <p>Base</p> <p>"L" Blank "M" MPOx1 Transversal</p>	<p>268-EZX01-1A1M8</p> <p>Base</p> <p>"L" Blank "M" MPOx2 Lateral</p>	<p>268-EZX01-1A1M9</p> <p>Base</p> <p>"L" Blank "M" MPOx2 Transversal</p>
--	---	---	--	---	---	---	---	---

Model with Cam Lock

268-EZX01-1A[2][xx] Optical Fiber Wall-Mount Enclosures, LGX, Blank Door, [Cam Lock](#)

Blank Base

Enclosures with L-type Cable Entry Adapter Brackets

<p>268-EZX01-1A200</p> <p>Base</p> <p>Includes:</p> <ul style="list-style-type: none"> - base - cover - cam lock - FM spools - label holder 	<p>268-EZX01-1A2L1</p> <p>Base</p> <p>"L" Blank "L" Large Grommet</p>	<p>268-EZX01-1A2L2</p> <p>Base</p> <p>"L" Blank "L" Medium Grommet</p>	<p>268-EZX01-1A2L3</p> <p>Base</p> <p>"L" Blank "L" Small Grommet</p>	<p>268-EZX01-1A2L4</p> <p>Base</p> <p>"L" Blank "L" Small Gland</p>	<p>268-EZX01-1A2L5</p> <p>Base</p> <p>"L" Blank "L" Medium Gland</p>	<p>268-EZX01-1A2L6</p> <p>Base</p> <p>"L" Blank "L" Large Gland</p>
--	---	--	---	---	--	---

Enclosures with M-type Cable Entry Adapter Brackets

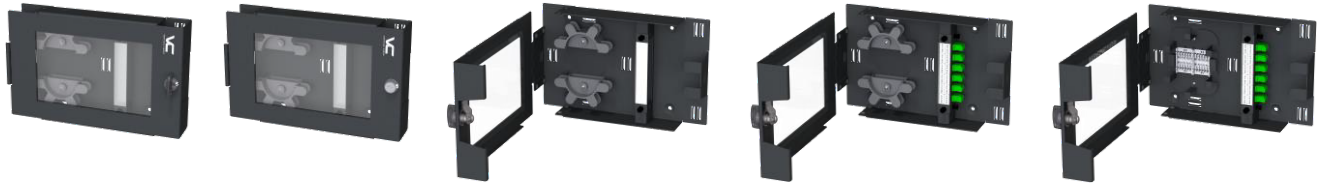
<p>268-EZX01-1A2M1</p> <p>Base</p> <p>"L" Blank "M" Medium Grommet</p>	<p>268-EZX01-1A2M2</p> <p>Base</p> <p>"L" Blank "M" Small Grommet</p>	<p>268-EZX01-1A2M3</p> <p>Base</p> <p>"L" Blank "M" Small Gland</p>	<p>268-EZX01-1A2M4</p> <p>Base</p> <p>"L" Blank "M" Medium Gland</p>	<p>268-EZX01-1A2M5</p> <p>Base</p> <p>"L" Blank "M" Large Gland</p>	<p>268-EZX01-1A2M6</p> <p>Base</p> <p>"L" Blank "M" MPOx1 Lateral</p>	<p>268-EZX01-1A2M7</p> <p>Base</p> <p>"L" Blank "M" MPOx1 Transversal</p>	<p>268-EZX01-1A2M8</p> <p>Base</p> <p>"L" Blank "M" MPOx2 Lateral</p>	<p>268-EZX01-1A2M9</p> <p>Base</p> <p>"L" Blank "M" MPOx2 Transversal</p>
--	---	---	--	---	---	---	---	---

Surface- and Wall-Mount Enclosures

Adapter Plate Enclosures - EZX & EZV Series



EZ-View Series



Model with Cam Latch

268-EZV01-1A[1][xx] Optical Fiber Wall-Mount Enclosures, LGX, Viewport Door, [Cam Latch](#)

Blank Base

268-EZV01-1A100

Base

Includes:

- base
- cover
- cam latch
- FM spools
- label holder

Enclosures with L-type Cable Entry Adapter Brackets

268-EZV01-1A1L1	268-EZV01-1A1L2	268-EZV01-1A1L3	268-EZV01-1A1L4	268-EZV01-1A1L5	268-EZV01-1A1L6
Base	Base	Base	Base	Base	Base
"L" Blank "L" Large Grommet	"L" Blank "L" Medium Grommet	"L" Blank "L" Small Grommet	"L" Blank "L" Small Gland	"L" Blank "L" Medium Gland	"L" Blank "L" Large Gland

Enclosures with M-type Cable Entry Adapter Brackets

268-EZV01-1A1M1	268-EZV01-1A1M2	268-EZV01-1A1M3	268-EZV01-1A1M4	268-EZV01-1A1M5	268-EZV01-1A1M6	268-EZV01-1A1M7	268-EZV01-1A1M8	268-EZV01-1A1M9
Base	Base	Base	Base	Base	Base	Base	Base	Base
"L" Blank "M" Medium Grommet	"L" Blank "M" Small Grommet	"L" Blank "M" Small Gland	"L" Blank "M" Medium Gland	"L" Blank "M" Large Gland	"L" Blank "M" MPOx1 Lateral	"L" Blank "M" MPOx1 Transversal	"L" Blank "M" MPOx2 Lateral	"L" Blank "M" MPOx2 Transversal

Model with Cam Lock

268-EZV01-1A[2][xx] Optical Fiber Wall-Mount Enclosures, LGX, Viewport Door, [Cam Lock](#)

Blank Base

268-EZV01-1A200

Base

Includes:

- base
- cover
- cam latch
- FM spools
- label holder

Enclosures with L-type Cable Entry Adapter Brackets

268-EZV01-1A2L1	268-EZV01-1A2L2	268-EZV01-1A2L3	268-EZV01-1A2L4	268-EZV01-1A2L5	268-EZV01-1A2L6
Base	Base	Base	Base	Base	Base
"L" Blank "L" Large Grommet	"L" Blank "L" Medium Grommet	"L" Blank "L" Small Grommet	"L" Blank "L" Small Gland	"L" Blank "L" Medium Gland	"L" Blank "L" Large Gland

Enclosures with M-type Cable Entry Adapter Brackets

268-EZV01-1A2M1	268-EZV01-1A2M2	268-EZV01-1A2M3	268-EZV01-1A2M4	268-EZV01-1A2M5	268-EZV01-1A2M6	268-EZV01-1A2M7	268-EZV01-1A2M8	268-EZV01-1A2M9
Base	Base	Base	Base	Base	Base	Base	Base	Base
"L" Blank "M" Medium Grommet	"L" Blank "M" Small Grommet	"L" Blank "M" Small Gland	"L" Blank "M" Medium Gland	"L" Blank "M" Large Gland	"L" Blank "M" MPOx1 Lateral	"L" Blank "M" MPOx1 Transversal	"L" Blank "M" MPOx2 Lateral	"L" Blank "M" MPOx2 Transversal

Surface- and Wall-Mount Enclosures

Adapter Plate Enclosures - EZX & EZV Series

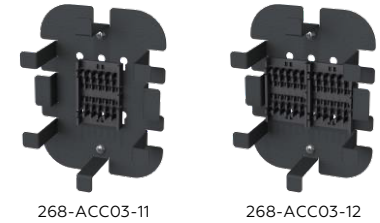


CHARACTERISTICS

Adapter plate format:	LGX.		
Capacity:	adapter plates: 1; fibers: up to 24; splices: up to 24.		
Access:	single door, cam latch or cam lock options (Southco® brand hardware).		
Mounting:	surface/wall, left- or right-hand independent.		
Cable management:	cable entry port adapters (ordered separately); cable anchor points (bridge lances); set of cable ties and Velcro® tie wraps.		
Fiber management:	FM spools (default); FM stage (optional).		
Labeling:	removable label holder, plain paper inserts.		
Materials:	1.5-mm (15-GA) aluminum alloy; black powder coating.		
Threaded joints:	SI (metric).		
Mechanical:	cam latch/cam lock: average ultimate load: 180 N (40.5 lbf); recommended mounting nut tightening torque: 5 N-m (44 pfi) max; recommended pawl screw tightening torque: 4 N-m (35 pfi) max; cycle life: 25,000 cycles at no load.		
Environmental:	operating temperature: -20 °C–+70 °C (-4 °F–+158 °F); operating humidity: ≤95 % RH non-condensing.		
Dimensions:	Width: 280 mm (11 in); Height: 180 mm (7 in); Depth: 50 mm (2 in) without protruding parts of locks and latches ("box" only).		
Weight:			

Fiber-Management/Splicing Stage for EZ-Xcess and EZ-View Series

- 268-ACC03-11-00 Stage with One Splice Holder, No Splice Protection Sleeves.
- 268-ACC03-11-CA Stage with One Splice Holder, 6×40-mm Splice Protection Sleeves.
- 268-ACC03-11-EA Stage with One Splice Holder, 12×40-mm Splice Protection Sleeves.
- 268-ACC03-12-00 Stage with Two Splice Holders, No Splice Protection Sleeves.
- 268-ACC03-12-EA Stage with Two Splice Holders, 12×40-mm Splice Protection Sleeves.
- 268-ACC03-12-FA Stage with Two Splice Holders, 24×40-mm Splice Protection Sleeves.



Splice holder capacity: twelve 2.5-mm splice sleeves, stacked in two rows in six positions.
Materials: 0.8 (20-GA) aluminum alloy, powder coating, black (RAL 9005).
Threaded joints: SI (metric).

Cable entry adapters for EZ-Xcess and EZ-View Series

EZX and EZV enclosures, excluding "blank-box" configurations, are supplied with one blank and one specialized cable entry adapter brackets. Cable entry adapter brackets may be ordered separately, adding flexibility in creating configurations per project requirements:

	BLANK	RUBBER GROMMETS			CABLE GLANDS			MPO ADAPTERS			
"L" type											
	268-ACC01-1A0	268-ACC01-1B1	268-ACC01-1C1	268-ACC01-1D1	268-ACC01-1E1	268-ACC01-1F1	268-ACC01-1G1				
"M" type											
	268-ACC01-2A0		268-ACC01-2B1	268-ACC01-2C1	268-ACC01-2H1	268-ACC01-2I1	268-ACC01-2J1	268-ACC01-2D1	268-ACC01-2E1	268-ACC01-2F2	268-ACC01-2G2
		for cables with external diameters:			for cables with external diameters:			connector type:			
		≤20 mm (≤0.8 in)	≤12 mm (≤0.5 in)	≤8 mm (≤0.3 in)	2 mm–6.5 mm (0.08 in–0.25 in)	3 mm–8 mm (0.12 in–0.32 in)	5 mm–12 mm (0.20 in–0.47 in)	MPO adapter, Type A, compact, flanged, black			
		grommet material:			gland form-factor:			count:			
		TPE (thermoplastic elastomer), UL 94 V-2			M12	M16	M20	1		2	
					gland material:			connector mounting orientation:			
					PA/CR (polyamide/Neoprene)			lateral	transversal	lateral	transversal
	bracket material: 1.5-mm (15-GA) aluminum alloy bracket finish: powder coating, black (RAL 9005) mounting: four M3 CSK machine screws (included) packing: individual PE bag										